

6

5

4

3

2

1

D

D

C

C

B

B

A

A

23

10

11

55

56

1

SEE NOTE 8

43

36

11

16

39

43

36

35

34

5

SEE NOTE 8

1

32

8

MODEL:

TGF350 MK2

YEAR/ MARK:

08/2019
ONWARDS

SHEET 1 OF 9

6

5

4

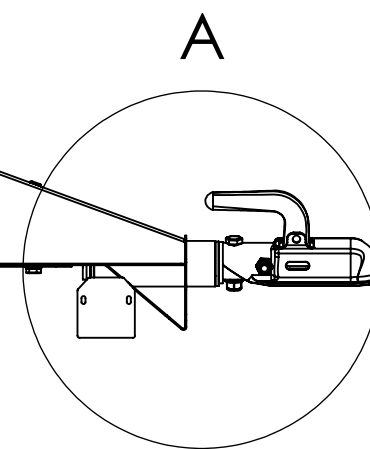
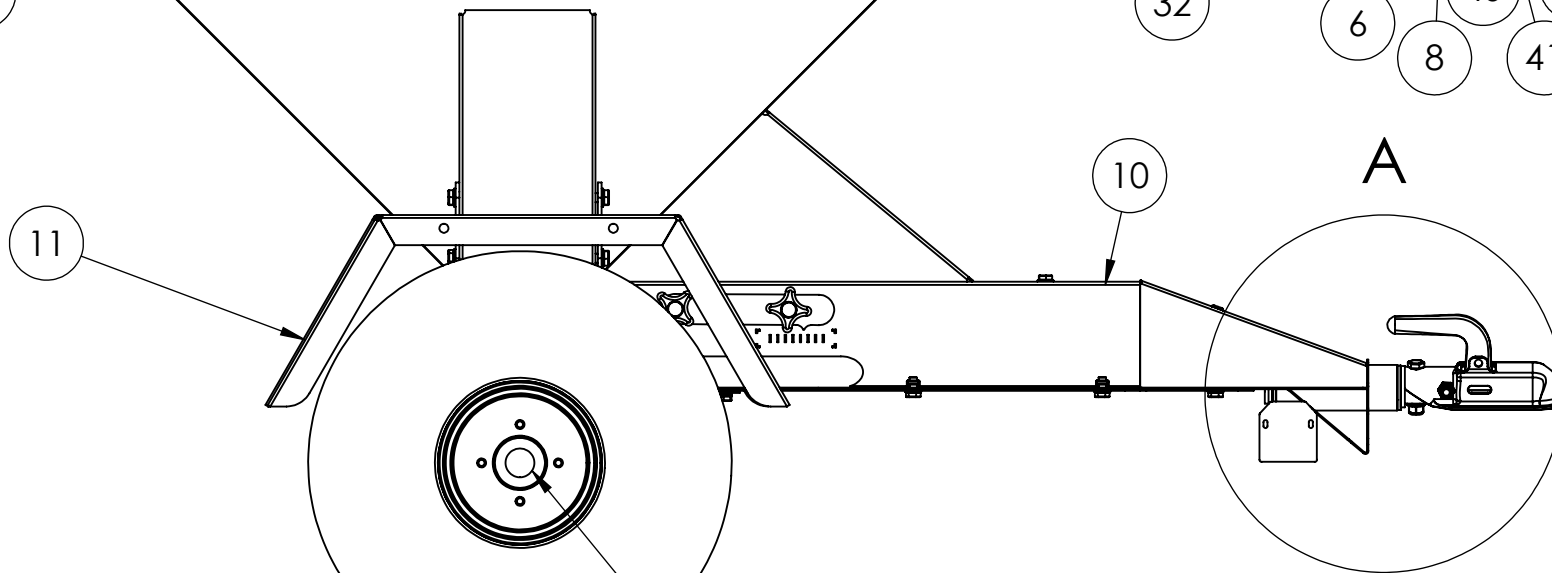
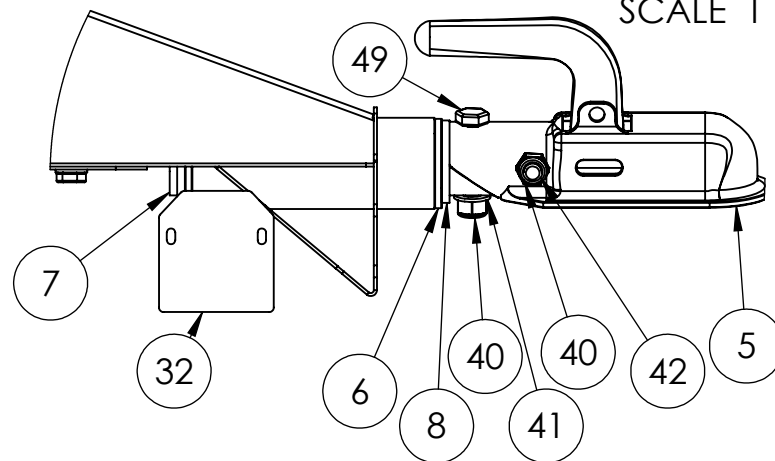
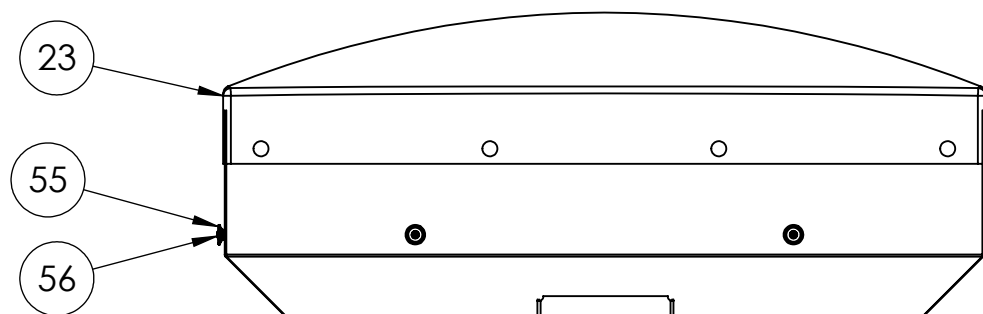
3

2

1

DETAIL A

SCALE 1 : 5



1 SEE NOTE A

MODEL: TGF350 MK2

YEAR/ MARK: 08/2019 ONWARDS

6

5

4

3

2

1

D

D

C

C

B

B

A

A

SEE NOTE A

55

56

29

2

20

21

FOR EXPLODED VIEW
SEE PAGE 5

20

29

2

MODEL:

TGF350 MK2

YEAR/ MARK:

08/2019
ONWARDS

SHEET 3 OF 9

6

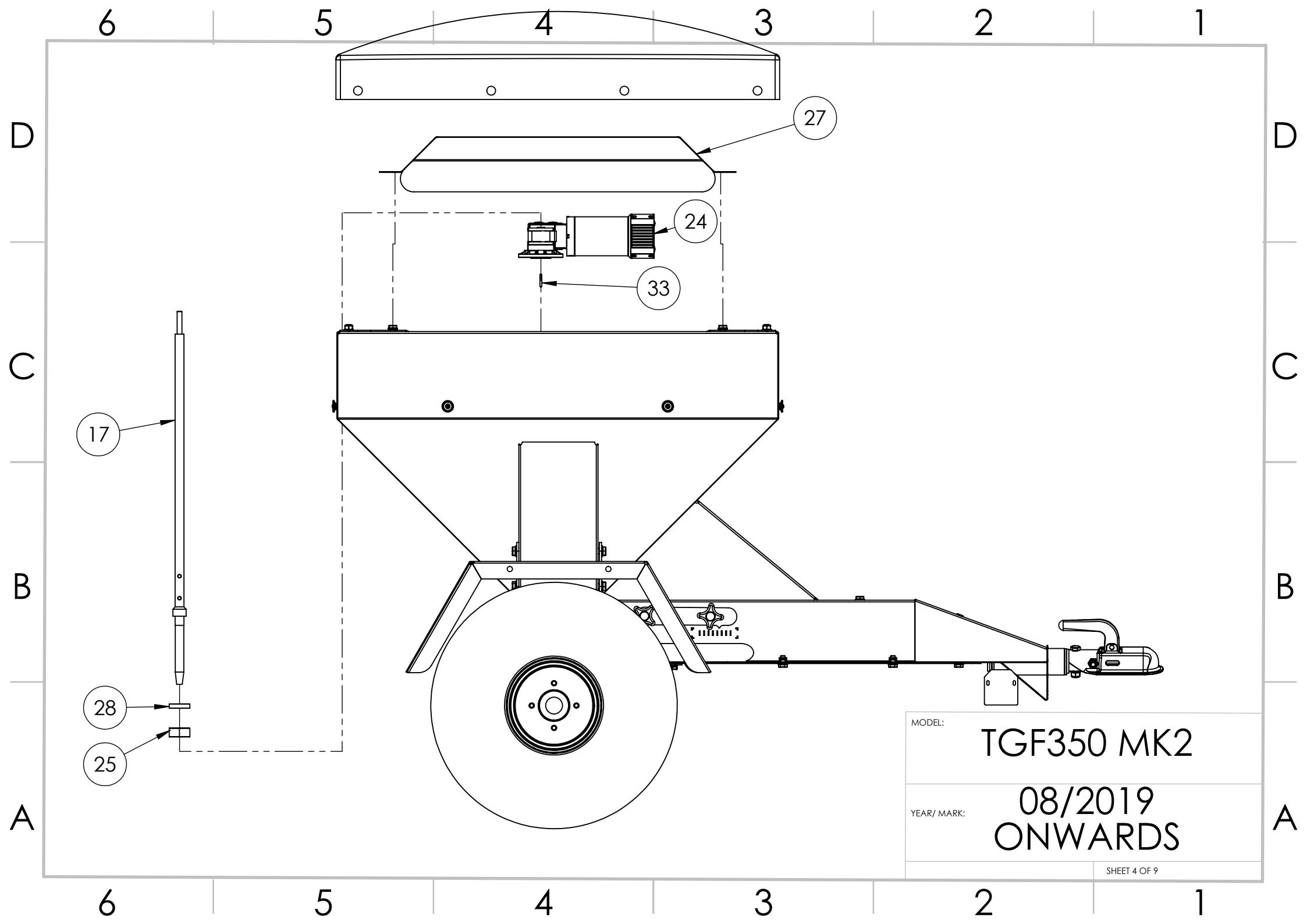
5

4

3

2

1

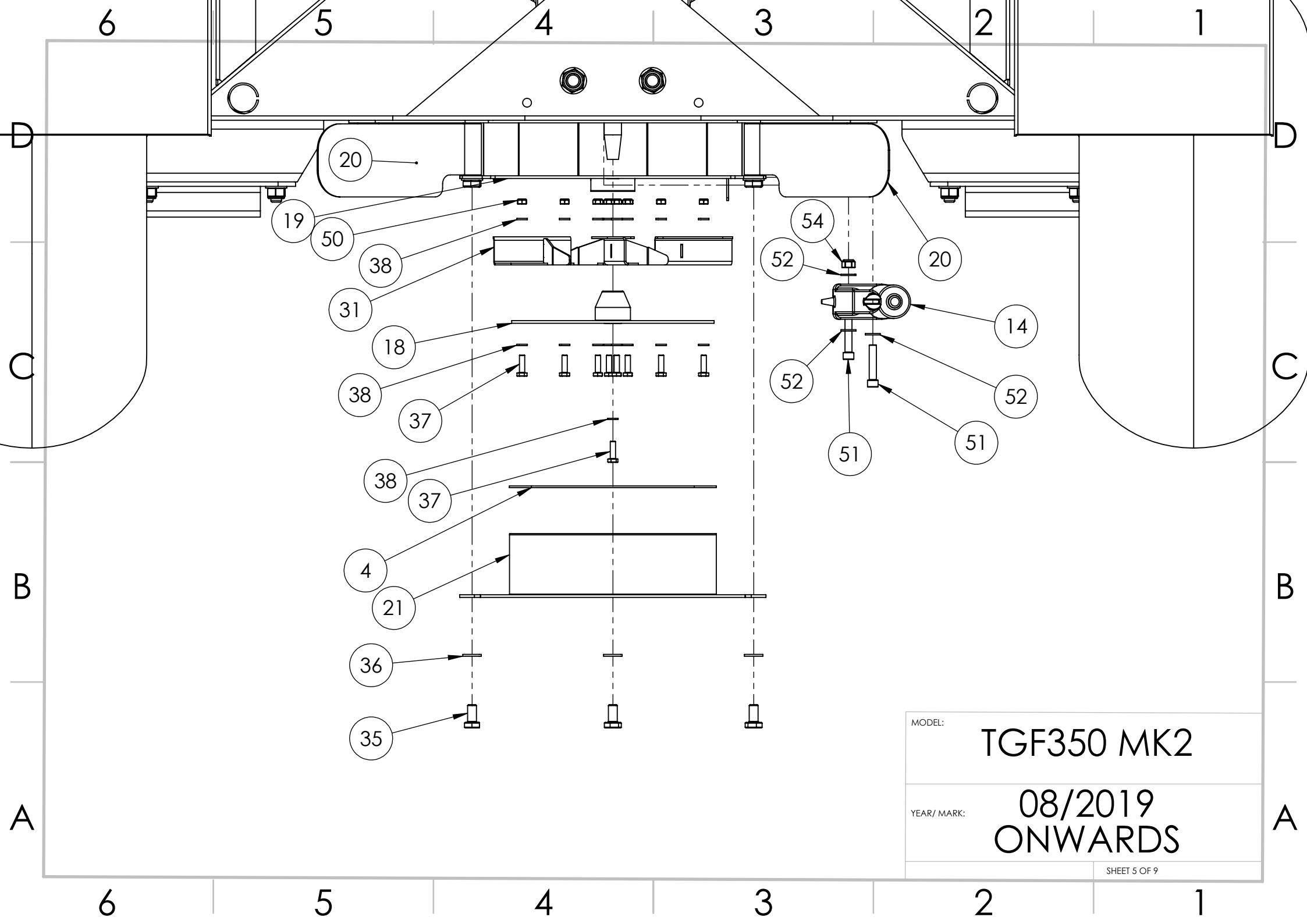


MODEL:

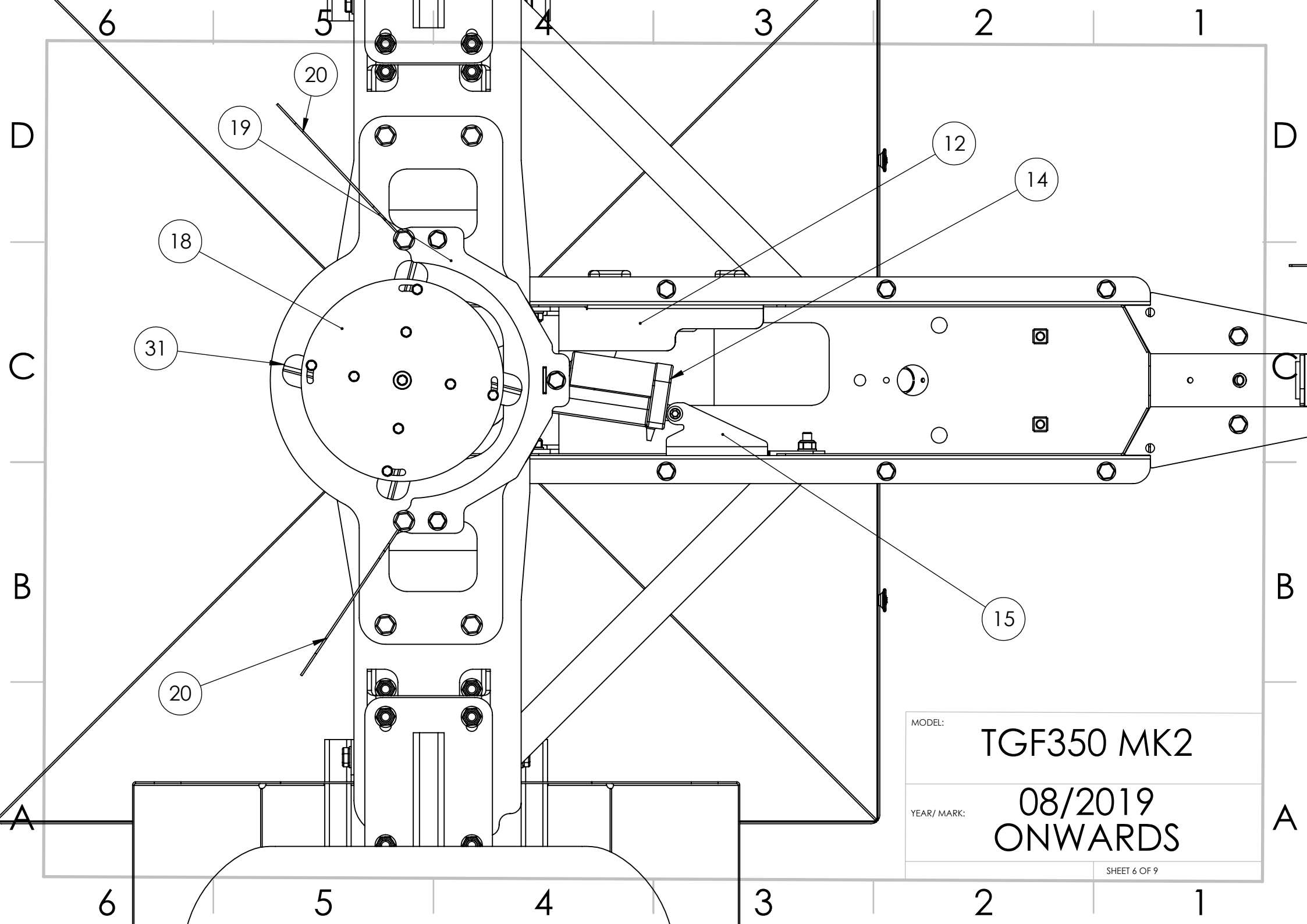
TGF350 MK2

YEAR/ MARK:

08/2019
ONWARDS



MODEL:	TGF350 MK2
YEAR/ MARK:	08/2019 ONWARDS
SHEET 5 OF 9	



MODEL:
TGF350 MK2

YEAR/ MARK:
**08/2019
ONWARDS**

6 5 4 3 2 1

D

D

C

C

B

B

A

A

ITEM NO.	PART NUMBER	Description	QUANTITY
1	WAT-22118W	22X11X8 WHEEL ASSEMBLY 4X4" PCD	2
2	TF350-SAS	STANDARD AXLE ASSEMBLY, TF350	2
3	ADR-200H	HUB 4X4" SSP	2
4	TF350-009	BASE COVER PLATE	1
5	8802429X	8802429X COUPLING 50MM BALL TO SUIT 43MM TUBE	1
6	SH-002	SWIVEL HITCH BUSH	2
7	SH-001	SWIVEL HITCH DRAWTUBE ASSEMBLY	1
8	SH-003	SWIVEL HITCH WASHER 44MM ID 60MM OD 5MM THICK	1
9	TF350-007	DRIVE COVER PLATE REV E	1
10	TF350-MFA	MAIN FRAME ASSEMBLY, TF350	1
11	TF350-MGA	MUD GUARD ASSEMBLY, TF350	2
12	TGF350-FAP	FEEDRATE ADJUSTMENT PLATE, TGF350	1
13	TGF350-TPA	TOP PLATE ASSEMBLY, TGF350	1
14	LAS1-2-1-70-12BE	ACTUATOR, 12V, 70MM STROKE, 600N	1
15	TGF350-AMA	ACTUATOR MOUNT ASSEMBLY, TGF350	1
16	TF350-013	DROP INDICATOR PLATE REV B	1
17	AS-11866	MOTOR SHAFT, 11MM DRIVE DIA, 20MM OUTPUT TAPER 7°	1
18	TGF300-SPA	SPINNER PLATE ASSEMBLY, TGF350	1
19	TGF350-SMA	SPINNER MOUNT ASSEMBLY, TRAILED GAME FEEDER	1
20	TGF350-SFA	SIDE FLAP ASSEMBLY, TGF350	2
21	TGF350-BPA	BELLY PLATE ASSEMBLY, TGF350	1
22	498047	RUBBER GROMMET, PVC, 10MM ID, 16MM OD, 7MM THICK, 12MM HOLE DIA	1
23	TF350-TARPAULIN	TARPAULIN, TF350, 1010MM X 1010MM X 100MM, ORANGE PANAMA PVC 900G WITH BLACK CORD AND 16 EYELETS	1
24	MCC12MP4NB5-560	MOTOR, GEARED, MINIMOTOR, 12VDC, 19.2A, 560RPM, IP65	1

MODEL: **TGF350 MK2**

YEAR/ MARK: **08/2019 ONWARDS**

6 5 4 3 2 1

ITEM NO.	PART NUMBER	Description	QUANTITY
25	3204-2RS	Bearing, 3204 2 rubber sheilded	1
26	TGF350-MMA	MOTOR MOUNT ASSEMBLY, TGF300	1
27	TGF350-MCP	MOTOR COVER PLATE ASSEMBLY, TGF350	1
28	OS30X47X10 R21	OIL SEAL, 30MM ID, 47MM OD, 10MM THICK, R21	1
29	TGF300-ABA	AXLE BLOCK ASSEMBLY 70MM	2
30	TGF30-SGA	SHUTTER GATE ASSEMBLY, TGF350	1
31	TGF350-SVA	SPINNER VANE ASSEMBLY, TGF350	4
32	TGF350-019	SOCKET BACKING PLATE, 2MM	1
33	68854430	FEATHER KEY, 4X4X30MM	1
34	M10-000CN	M10 Cage Nut	19
35	M10-20HB	M10 x 20 Hex Head Bolt	21
36	M10-000PW	M10 PLAIN WASHER FORM A	35
37	M6-20HB	M6 x 20 Hex Head Bolt	13
38	M6-000PW	M6 Plain Washer Form A	25
39	F189-60 M12	HAND WHEEL, M12, 30MM THREAD	2
40	M12-000NN	M12 NYLOCK NUT	34
41	M12-000PW	M12 PLAIN WASHER FORM A	65
42	M12-70HB	M12X70 HEX HEAD BOLT	3
43	M10-30HB	M10 x 30 Hex Head Bolt	6
44	M10-000NN	M10 NYLOCK NUT	8
45	M16-50HB	M16 x 50 Hex Head Bolt	2
46	M16-000PW	M16 plain Washer	4
47	M16-000NN	M16 Nylock Nut	2
48	M12-30HB	M12 x 30 Hex Head Bolt	28

MODEL:	TGF350 MK2
YEAR/ MARK:	08/2019 ONWARDS
<small>SHEET 8 OF 9</small>	

6

5

4

3

2

1

ITEM NO.	PART NUMBER	Description	QUANTITY
49	M12-60HB	M12X60 HEX HEAD BOLT	2
50	M6-000NN	M6 Nylock Washer	12
51	M8-40CS	M8 x 40 Cap Head Set Screw	2
52	M8-000PW	M8 Plain Washer From A	3
53	GFM-1214-06	BEARING 12MM ID 14MM OD 6MM DEPTH	4
54	M8-000NN	M8 NYLOCK NUT	1
55	MP995B	TRAILER BUTTON CLEAT, BLACK PLASTIC	8
56	M5-20PP	M5 x 20 Pan Head Pozi Screw	8
57	M5-000PW	M5 Plain Washer Form A	8
58	M5-000NN	M5 Nylock Nut	8

NOTES:

- A. VARIOUS TYRE OPTIONS AVAILABLE, STANDARD FITMENT IS WAT-22118W, OPTIONAL OVERSIZE TYRES ARE WAT-25139W PART SHOWN IS FOR COMPLETE WHEEL AND TYRE ASSEMBLY, THESE ARE NOT AVAILABLE SEPERATELY
- B. WIRING DIAGRAM / ELECTRONIC COMPONENTS NOT SHOWN ON THIS BILL OF MATERIALS OR DRAWINGS

MODEL:	TGF350 MK2
YEAR/ MARK:	08/2019 ONWARDS
<small>SHEET 9 OF 9</small>	

6

5

4

3

2

1

D

D

C

C

B

B

A

A