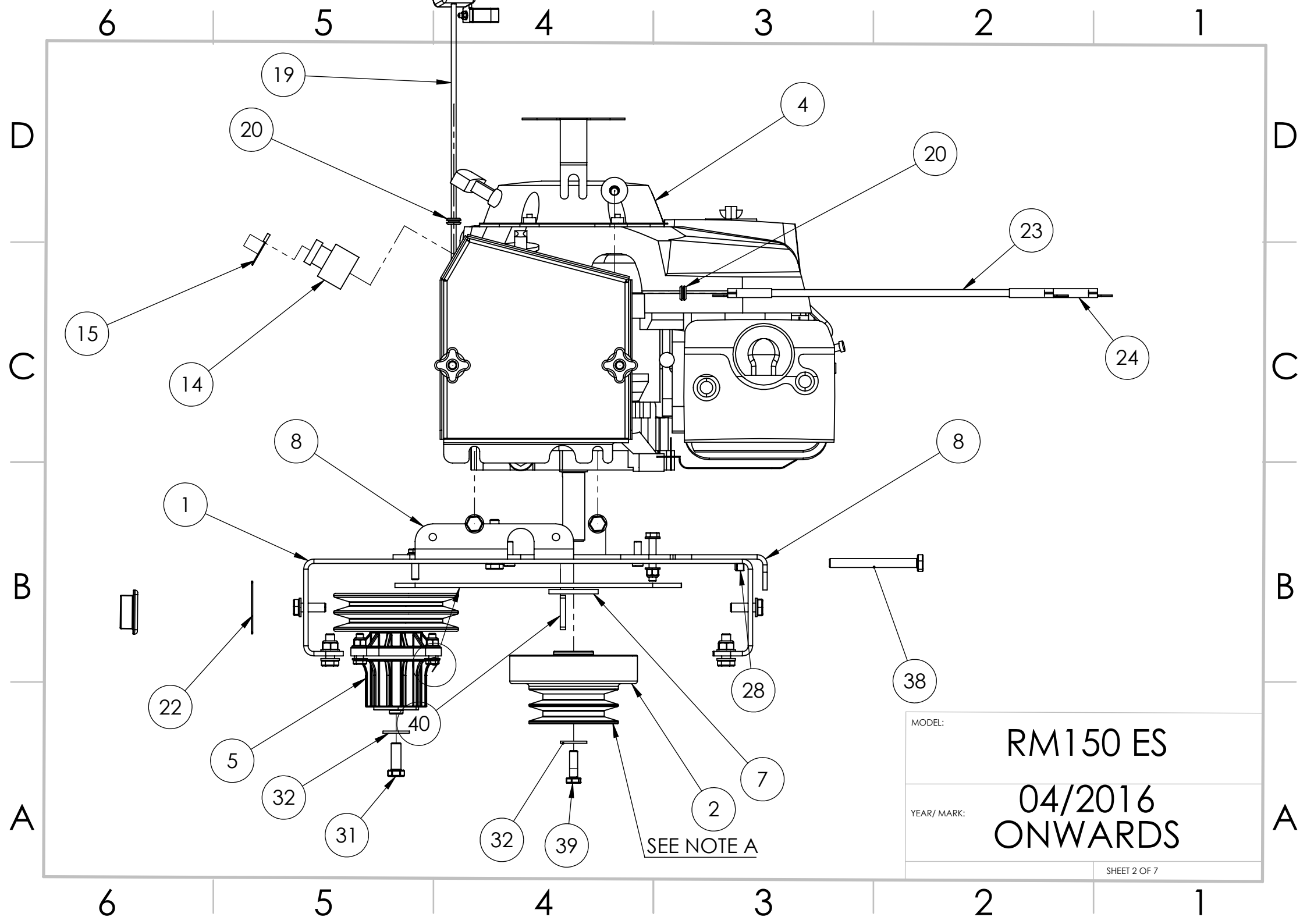


MODEL:

RM150 ES

YEAR/ MARK:

04/2016  
ONWARDS



MODEL: RM150 ES

YEAR/ MARK: 04/2016 ONWARDS

ITEM NO.	PART NUMBER	DESCRIPTION	RM150-ES/QTY.
1	RM-ERA	ENGINE RISER ASSEMBLY, RM SERIES	1
2	K125-1435	CLUTCH, 145MM OD, 4" 2 GROOVE PULLEY, 1" INPUT SHAFT	1
3	RM150-BGR	BELT GUARD RH RM150	1
4	GXV390-T1-DN5	HONDA GXV390-T1-DN5-OH 13HP VERTICAL SHAFT ENGINE 1" PARALLEL SHAFT	1
5	RM-SA	SPINDLE ASSEMBLY, RM, 2 GROOVE	3
6	RM120-009	THROTTLE CABLE HOLDER, RM SERIES	1
7	RM120-074	CLUTCH WASHER RM SERIES	1
8	RM-ESA	ENGINE SLIDE PLATE ASSEMBLY, RM SERIES	1
9	RM-ECA	ENGINE CAPTIVE ASSEMBLY, RM SERIES	1
10	RM-DMA	DRAWBAR MOUNT ASSEMBLY RM SERIES	1
11	RM150-RGA	REAR GUARD ASSEMBLY, RM150	1
12	RM-BBA	BATTERY BASE ASSEMBLY	1
13	518901026a514	BATTERY POWERSPORTS AGM 12V 18AH	1
14	XB5AA31	PUSHBUTTON 28MM GREEN, NORMALLY OPEN	1
15	ZBY2303	INDICATOR PLATE, START TEXT, TO SUIT XB5AA31 PUSHBUTTON	1

MODEL:	RM150 ES
YEAR/ MARK:	04/2016 ONWARDS
SHEET 3 OF 7	

ITEM NO.	PART NUMBER	DESCRIPTION	RM150-ES/QTY.
16	F188-40 M10	HANDWHEEL M10 THROUGH THREADED 40MM 4 LUG	2
17	RM-BLA	BATTERY LID ASSEMBLY	1
18	RM-BTB	BATTERY TOP BRACKET RM SERIES	1
19	RM-TA	THROTTLE ASSEMBLY COMPLETE, RM SERIES	1
20	498047	RUBBER GROMMET, PVC, 10MM ID, 16MM OD, 7MM THICK, 12MM HOLE DIA	3
21	RM150-BCA	BLADE CARRIER ASSEMBLY, RM150	3
22	SERIALPLATE	SERIAL PLATE CHAPMAN	1
23	BCB-350	BATTERY CABLE BLACK 350MM	1
24	BCR-400	BATTERY CABLE, RED, 400MM LONG	1
25	M10-20HB	M10 x 20 Hex Head Bolt	11
26	M10-000PW	M10 PLAIN WASHER FORM A	28
27	M10-30HB	M10 x 30 Hex Head Bolt	8
28	M10-000NN	M10 NYLOCK NUT	10
29	M8-000NN	M8 NYLOCK NUT	14
30	M8-30HS	M8 x 30 Hex Head Set Screw	14
31	7-16 20 x 1 1-4 UNF	7-16 x1 1-4 UNF "0 Hex Head Bolt	3
32	M10-000PWG	M10 Plain Washer Form G	8
33	M10-000CN	M10 Cage Nut	3

MODEL:	RM150 ES
YEAR/ MARK:	04/2016 ONWARDS
SHEET 4 OF 7	

ITEM NO.	PART NUMBER	DESCRIPTION	RM150-ES/QTY.
34	M8-50HB	M8 x 50 Hex Head Bolt	1
35	M8-000PW	M8 Plain Washer From A	29
36	M8-20CS	M8 x 20 Cap Head Set Screw	2
37	M10-50HB	M10 x 50 Hex Head Bolt	1
38	M10-100HS	M10 x 100 Hex Head Set Screw	1
39	3-8 24 x 1 1-4 UNF	3-8 x1 1-4 UNF 24 Hex Head Bolt	1
40	68856640	KEYWAY, 6X6X40MM FEATHERED ENDS STEEL	1
41	RM150-BGL	BELT GUARD LH, RM150	1
42	BX63	BELT, BX63, COGGED RAW EDGE	2
43	RM150-MDA	MAIN DECK ASSEMBLY RM150	1
44	RM150-AA	AXLE ASSEMBLY, RM150	1
45	RM150-018	FIXING STRIP 5MM	2
46	RM150-019	FIXING STRIP SHORT 5MM	1
47	ADR-200H	HUB 4X4" SSP	2
48	WAT-1978-4x4	WHEEL AND TYRE ASSEMBLY 19X7X8 WANDA P308 ON 4X4" PCD	2
49	RBR-570	RUBBER STRIP, 570MM LONG, 5MMX100MM INSERTION	2
50	RBR-500	RUBBER STRIP, 500MM LONG, 5MMX100MM INSERTION	1

MODEL:	RM150 ES
YEAR/ MARK:	04/2016 ONWARDS
SHEET 5 OF 7	

6 5 4 3 2 1

ITEM NO.	PART NUMBER	DESCRIPTION	RM150-ES/QTY.
51	MFM-1218-12	IGUS BEARING MFM 12MM ID 18MM OD 12MM THICK TOP HAT STYLE MFM-1218-12	1
52	SHS-12(ASSY)	SWIVEL HITCH SCREW ASSEMBLY 12MM THREAD	1
53	DBA-900	DRAWBAR 900MM LONG 50X50X5MM BOX ASSEMBLY	1
54	TL-1902000GP	TOP LINK CAT 0	1
55	SH-002		2
56	SH-003	SWIVEL HITCH WASHER 44MM ID 60MM OD 5MM THICK	1
57	8802429X	8802429X COUPLING 50MM BALL TO SUIT 43MM TUBE	1
58	SH-001	SWIVEL HITCH DRAWTUBE ASSEMBLY	1
59	RM150-HAC	HIEGHT ADJUSTMENT COMPLETE ASSEMBLY, RM150	1
60	56115800KN	MOWER BLADE BOLT, KUHN STYLE	9
61	55903310KR	MOWER BLADE LH KUHN STYLE	9
62	M12-000NN	M12 NYLOCK NUT	14
63	M8-000LN	M8 Lug Nut	10
64	M16-90HB	M16 x 90 Hex Head Bolt	2
65	M16-000PW	M16 plain Washer	8
66	M16-000NN	M16 Nylock Nut	4
67	M12-90HB	M12X90MM HEX HEAD BOLT	2

MODEL: **RM150 ES**

YEAR/ MARK: **04/2016 ONWARDS**

SHEET 6 OF 7

6 5 4 3 2 1

D

D

C

C

B

B

A

A

ITEM NO.	PART NUMBER	DESCRIPTION	RM150-ES/QTY.
68	M12-000PW	M12 PLAIN WASHER FORM A	8
69	M12-60HB	M12X60 HEX HEAD BOLT	1
70	M12-70HB	M12X70 HEX HEAD BOLT	1
71	M12-40HB	M12 x 40 Hex Head Bolt	1
72	M10-90HS	M10x90 Hex Head Set Screw	1
73	M8-30CS	M8 x 30 Cap Head Set Screw	10
74	M16-150HB	M16x150 Hex Head Bolt	2
75	RM120-039	BLADE WASHER, RM SERIES	9
76	MFM-1618-12	IGUS BEARING 16MM ID, 18MM OD, 12MM THICKNESS TOP HAT STYLE MFM-1618-12	2
77	BTC-5050T	BOX CAP THICK WALL 3-5MM TO SUIT 50X50	1

NOTES:

A: UP TO 06/2018 CLUTCH HAS A 125MM OUTSIDE DIAMETER. FROM 06/2017 CLUTCH HAS A 145MM OUTSIDE DIAMETER. 145MM DIAMETER CLUTCHES CANNOT BE FITTED TO OLDER MACHINES DUE TO STEELWORK CLEARANCE. IN THIS CASE A SMALLER 125MM DIAMETER CLUTCH CAN BE SUPPLIED.

MODEL:	RM150 ES
YEAR/ MARK:	04/2016 ONWARDS
SHEET 7 OF 7	