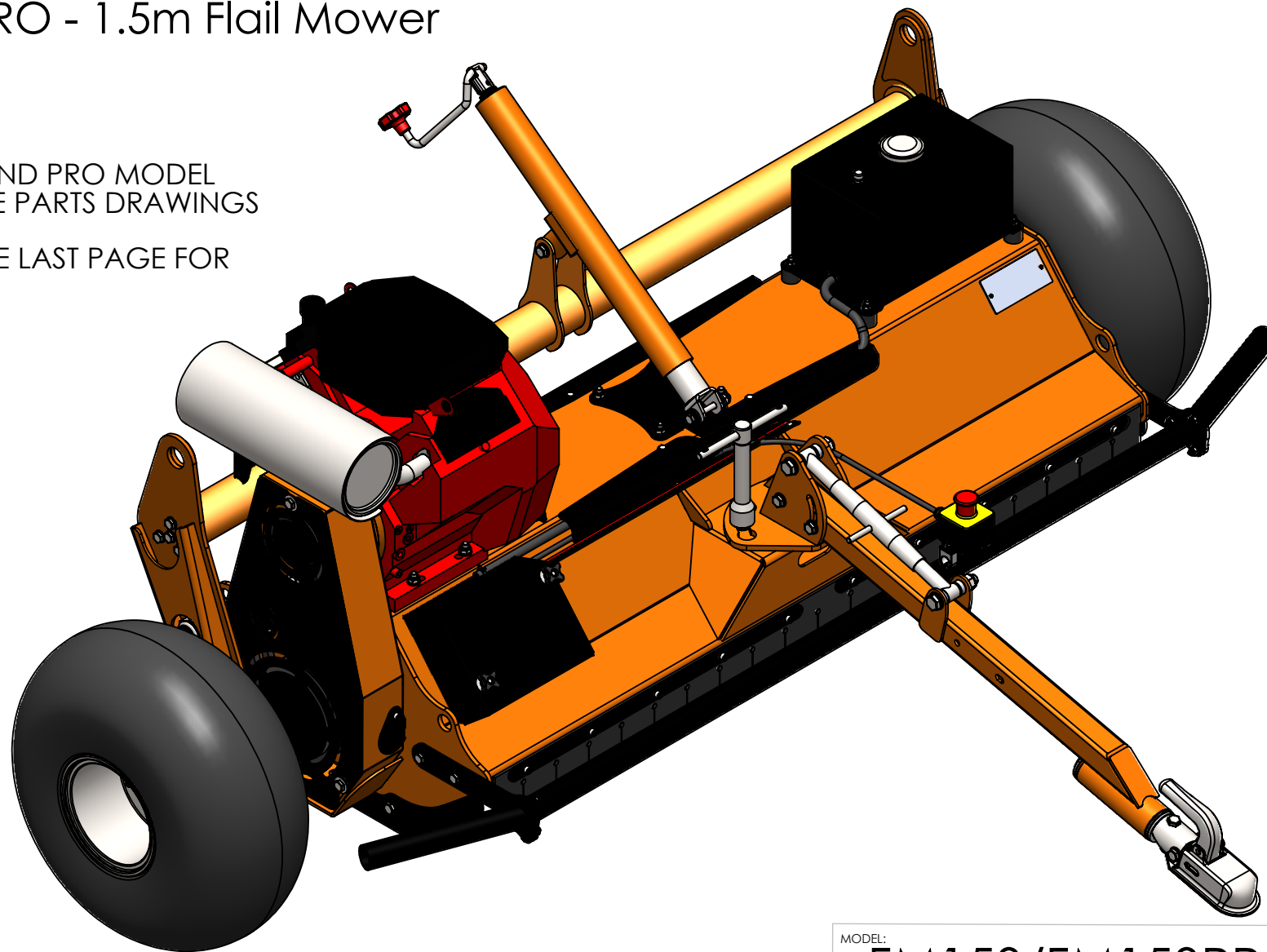


# FM150 & FM150PRO - 1.5m Flail Mower

## Parts Drawings

BOTH THE STANDARD AND PRO MODEL  
ARE COVERED BY THESE PARTS DRAWINGS

REFER TO NOTES ON THE LAST PAGE FOR  
EXCEPTIONS.



MODEL:  
FM150/FM150PRO

YEAR/ MARK:  
01/2012  
Onwards

SHEET 1 OF 12

# Mainframe, Axle & Drawbar

BEARINGS AVAILABLE  
SEPERATELY:

PART NO.  
SPP HUB: *BR02 SP*  
1 OFF PER HUB

ADR HUB: *6205-2RS*  
2 OFF PER HUB

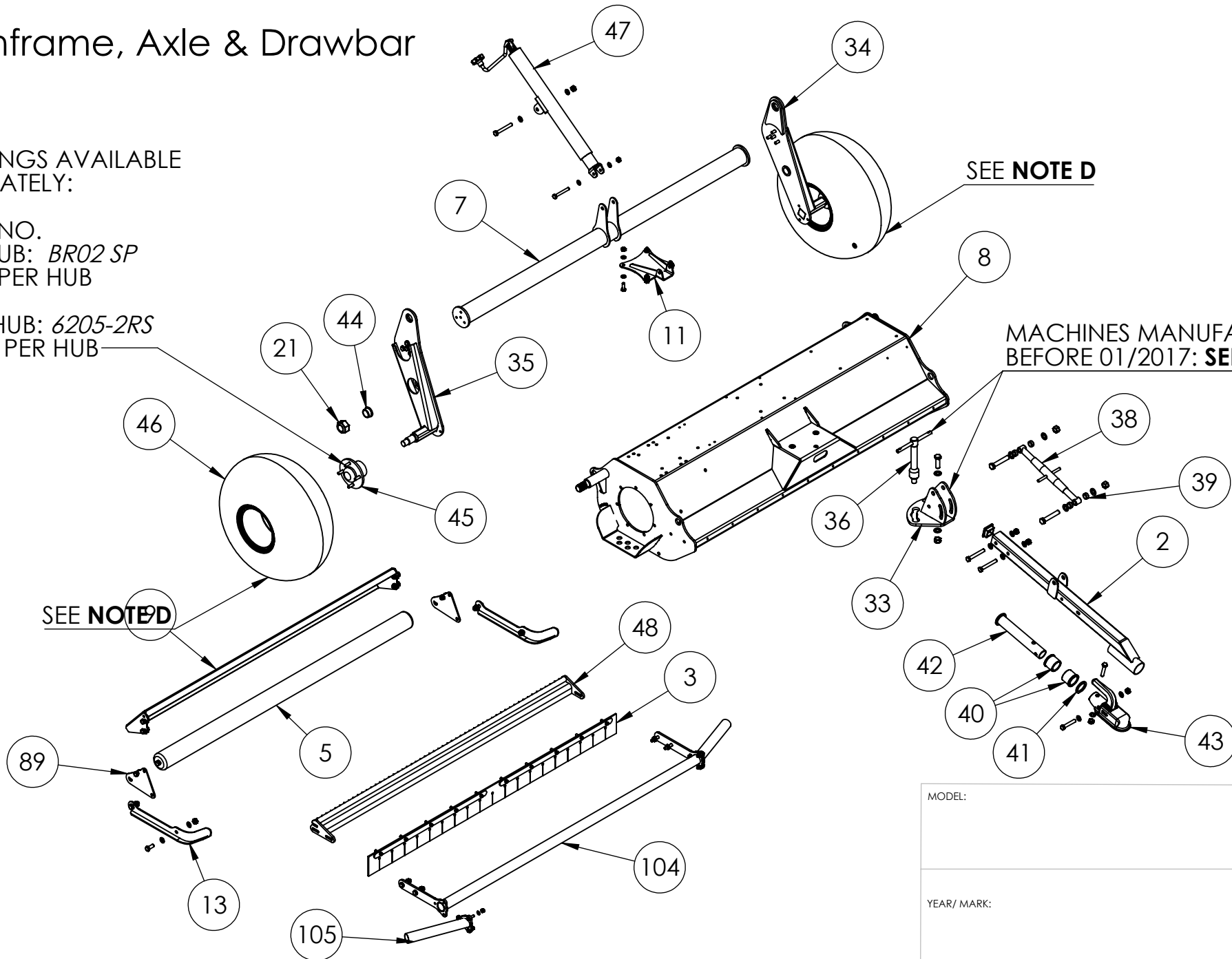
SEE **NOTE D**

MACHINES MANUFACTURED  
BEFORE 01/2017: **SEE NOTE B**

SEE **NOTE D**

MODEL:

YEAR/ MARK:



# Driveline & Rotor

ENGINE SERVICE KIT AVAILABLE:  
ENGINE DETAILS  
FM150 - HONDA GX630  
FM150PRO - HONDA IGX800

FOR MACHINES MANUFACTURED  
BEFORE 02/2018: **SEE NOTE A**

ASSEMBLY PART NO.  
FM-TAC

FLAIL OPTIONS DETAILED  
ON FOLLOWING PAGE

US/CA  
ONLY

DETAIL A

MODEL:

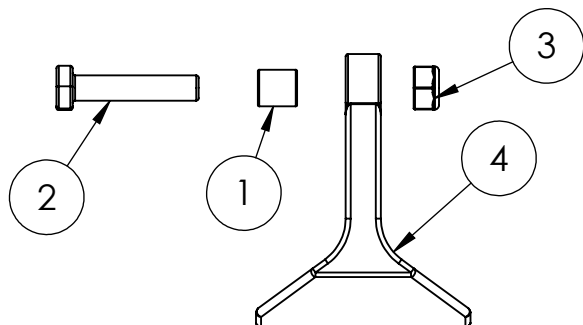
FM150/150PRO

YEAR/ MARK:

01/2012  
Onwards

SHEET 3 OF 12

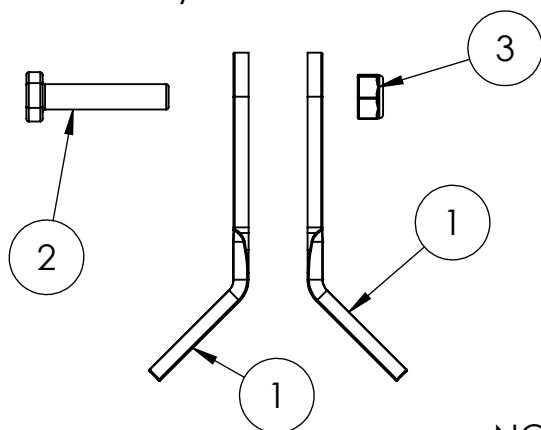
FM HAMMER FLAIL ASSEMBLY - PART NO. FM-HF(ASSY)  
(PRO MODEL)



COMPONENT PARTS

ITEM NO.	PART NUMBER	Description	QTY.
1	BB-01	BLADE BUSH	1
2	M10-50HB	M10 x 50 Hex Head Bolt	1
3	M10-000NN	M10 NYLOCK NUT	1
4	FM-HF	HAMMER FLAIL, REV B	1

FM Y FLAIL ASSEMBLY - PART NO. FM-SB(ASSY)  
(STANDARD MODELS)



COMPONENT PARTS

ITEM NO.	PART NUMBER	Description	QTY.
1	FM-SB	STANDARD FLAIL BLADE, SUIT FM SERIES, BLACK PAINTED	2
2	M10-50HB	M10 x 50 Hex Head Bolt	1
3	M10-000NN	M10 NYLOCK NUT	1

NO. FLAILS PER MACHINE

**FM120:**  
STANDARD=44  
HAMMER=22

**FM150:**  
STANDARD=52  
HAMMER=26

NOTE: CHECK WHICH FLAILS ARE FITTED TO THE MACHINE BEFORE ORDERING  
TO ENSURE THE CORRECT FLAILS ARE PURCHASED

MODEL:

**FM150/150PRO**

YEAR/ MARK:

**01/2012  
Onwards**

6

5

4

3

2

1

Twin Axle Components

ITEM NO.	PART NUMBER	Description	QTY.
1	ADR-200H	BEFORE FEB 2022 4X4" PCD; FEB 2022 ONWARDS 4X100MM PCD	4
2	FM120-TAS (PIN)	TWIN AXLE PIN ASSEMBLY	2
3	FM-TAS (BEAM)	TWIN AXLE BEAM ASSEMBLY, FM SERIES	2
4	FM-TAS (LH ARM)	TWIN AXLE ARM ASSEMBLY, LH	1
5	FM-TAS (RH ARM)	TWIN AXLE ARM ASSEMBLY, RH	1
6	GSM-3034-40	SLIDE BEARING, PLASTIC, 30MM ID, 34MM OD, 40MM LENGTH	2
7	M30-000NN	M30 Nylock Nut	2
8	WAT-22118W	22X11X8 WHEEL ASSEMBLY BEFORE FEB 2022 : ON 4X4" PCD RIM FEB 2022 ONWARDS: ON 4X100MM RIM	4
9	M10-40HB	M10X40 HEX HEAD SET SCREW	2
10	M10-000PW	M10 PLAIN WASHER FORM A	2

7

4

6

3

5

2

6

8

1

BEARINGS AVAILABLE SEPERATELY:  
PART NO.  
SPP HUB: *BR02 SP* 1 OFF PER HUB  
ADR HUB: *6205-2RS* 2 OFF PER HUB

MODEL:  
FM150/150PRO

YEAR/ MARK:  
01/2012  
Onwards

SHEET 5 OF 12

6

5

4

3

2

1

6		5		4		3		2		1	
D	ITEM NO.	PART NUMBER		Description						QTY.	
	1	FM150-MRA		MAIN ROTOR ASSEMBLY, FM150						1	
	2	DBA-900		DRAWBAR 900MM LONG 50X50X5MM BOX ASSEMBLY						1	
	3	CFM150-NI		RUBBER STRIP, TO SUIT FM150						1	
	4	FM150-011		FIXING STRIP, FM150, REV B						2	
C	5	FM150-RRA		REAR ROLLER ASSEMBLY, FM150, OA=1480, OF=1500						1	
	6	AD3025M820-1.5		RUBBER MOUNT WAISTED AD3025 M8X20MM THREAD						4	
	7	FM150-RBA		REAR BAR ASSEMBLY, FM150						1	
	8	FM150-MDA		MAIN DECK ASSEMBLY, FM150						1	
	9	FM150-RSA		REAR SKIRT ASSEMBLY, FM150						1	
B	10	GX630RH (STANDARD SERIES) GX800IRH (PRO SERIES)		HONDA V-TWIN HORIZONTAL SHAFT ENGINE						1	
	11	FM-HAM		HEIGHT ADJUSTER MOUNT						1	
	12	FM-RGA		ROTOR GUARD ASSEMBLY, FM SERIES						4	
	13	FM-SMA		SKID MOUNT ASSEMBLY						2	
	14	SF30-RHP		30MM ID HOUSED BEARING						2	
A	15	FM-DSB		DRIVEN SIDE BEARING MOUNT, FM						1	
	16	FM120-002		COVER PLATE, 2MM						1	
	17	FM-BGA		BELT GUARD ASSEMBLY, FM SERIES						1	
										MODEL: FM150/150PRO	
										YEAR/ MARK: 01/2012 Onwards	
										SHEET 6 OF 12	
6		5		4		3		2		1	

6

5

4

3

2

1

D

D

C

C

B

B

A

A

ITEM NO.	PART NUMBER	Description	QTY.
18	FM-TAA	TENSIONER ARM ASSEMBLY	1
19	FM-TBA	TENSIONER BASE ASSEMBLY	1
20	MFM-1618-12	IGUS BEARING 16MM ID, 18MM OD, 12MM THICKNESS TOP HAT STYLE MFM-1618-12	2
21	M30-000NN	M30 Nylock Nut	2
22	SPB170-2	SPB170/2 PULLEY, 2 GROOVE, 170MM PCD, B SECTION TO SUIT 2012 TAPERLOCK	1
23	SPB90/2ZP	PULLEY, 2 GROOVE, 90MM	1
24	SPB90/2 SPACER	SPACER TO SUIT SPB90/2 PULLEY	1
25	62002RS-SKF	BEARING, BALL, 10MM ID 30MM OD	2
26	SEE NOTE A ON FINAL PAGE	CLUTCH & PULLEY (SEE NOTE A FOR PART NUMBERS)	1
27	FM-BLA	BATTERY LOWER ASSEMBLY	1
28	FM-BUA	BATTERY UPPER ASSEMBLY	1
29	FM-FTA	FUEL TANK ASSEMBLY, FM	1
30	FCM50651	FUEL CAP VENTED 50MM	1
31	518901026a514	BATTERY POWERSPORTS AGM 12V 18AH	1
32	FM120-071	BELT GUARD GREASE POINT COVER	1
33	FM-DMA	DRAWBAR MOUNT ASSEMBLY, FM	1
34	FM-SAL	STANDARD AXLE ASSEMBLY LH	1

MODEL:

FM150/150PRO

YEAR/ MARK:

01/2012  
Onwards

SHEET 7 OF 12

6

5

4

3

2

1

D

C

B

A

D

C

B

A

ITEM NO.	PART NUMBER	Description	QTY.
35	FM-SAR	FM STANDARD AXLE ASSEMBLY, RH	1
36	SHS-20 (ASSY)	SWIVEL MOUNT 20MM, ASSEMBLY	1
37	BTC-5050T	BOX CAP THICK WALL 3-5MM TO SUIT 50X50	1
38	TL1902000GP	TOP LINK CAT 0	1
39	DBS-251711	DRAWBAR SPACER 25MM OD, 17MM ID, 11MM LONG	4
40	SH-002	SWIVEL HITCH BUSH, DELRIN, REV C	2
41	SH-003	SWIVEL HITCH WASHER 44MM ID 60MM OD 5MM THICK	1
42	SH-001	SWIVEL HITCH DRAWTUBE ASSEMBLY, REV C	1
43	8802429X	8802429X COUPLING 50MM BALL TO SUIT 43MM TUBE	1
44	MFM-3038-20	IGUS BEARING 30MM ID, 38MM OD, 20MM THICKNESS TOP HAT STYLE MFM-3038-20	2
45	ADR-200H	BEFORE FEB 2022 4X4" PCD; FEB 2022 ONWARDS 4X100MM PCD	2
46	WAT-22118W	22X11X8 WHEEL ASSEMBLY BEFORE FEB 2022 : ON 4X4" PCD RIM FEB 2022 ONWARDS: ON 4X100MM RIM	2
47	HAI-6091	Height Adjustment Jack Rev c	1
48	FM150-CBA	CUTTER BAR ASSEMBLY, FM150	1
49	2012-30	TAPERLOCK 30MM ID TO SUIT 2012 SOCKET	1
50	68858740	FEATHERED KEY 8 X 7 X 40MM	1
51	FM120-001	BELT GUARD COVER, REV E	1

MODEL:	FM150/150PRO
YEAR/ MARK:	01/2012 Onwards
SHEET 8 OF 12	



D

D

C

C

B

B

A

A

ITEM NO.	PART NUMBER	Description	QTY.
52	E07501052500M	SPRING, 19MM OD, 63MM FREE LENGTH, 10N/MM	1
53	FM120-003	TENSIONER SPRING CLIP	1
54	BX41	Belt BX41	2
55	BCB-800	BATTERY CABLE, BLACK, 770MM, 16MM DIA, TERMINATED ENDS ON 8MM TERMINALS, HEAT SHRINK COVERS	1
56	BCR-720	BATTERY CABLE RED 720MM TO FIT FM SERIES	1
57	FM-ESA	EMERGENCY STOP ASSEMBLY, TO SUIT FM SERIES	1
58	BSAU-8-100	FUEL HOSE, 8MM ID, 15MM OD, RUBBER, PER M	1
59	SERIALPLATE	SERIAL PLATE CHAPMAN	1
60	CTL-13.7	ROTOR SPRING BAND, Ø13.7-16.5MM	2
61	FM-SB	STANDARD FLAIL BLADE, SUIT FM SERIES, BLACK PAINTED	4
62	M8-000PWG	M8 Plain Washer Form G	1
63	M8-20CS	M8 x 20 Cap Head Set Screw	2
64	M10-000PWG	M10 Plain Washer Form G	8
65	3-8 24 x 1 1-4 UNF	3-8 x1 1-4 UNF 24 Hex Head Bolt	1
66	M10-20HB	M10 x 20 Hex Head Bolt	6
67	M10-30HB	M10 x 30 Hex Head Bolt	24

MODEL:

FM150/150PRO

YEAR/ MARK:

01/2012  
Onwards

SHEET 9 OF 12

D

C

B

A

D

C

B

A

ITEM NO.	PART NUMBER	Description	QTY.
68	M12-90HB	M12X90MM HEX HEAD BOLT	3
69	M12-000NN	M12 NYLOCK NUT	17
70	M12-000PW	M12 PLAIN WASHER FORM A	25
71	M10-000PW	M10 PLAIN WASHER FORM A	60
72	M10-80HB	M10 x 80 Hex Head Bolt	1
73	M10-000NN	M10 NYLOCK NUT	24
74	M10-50HB	M10 x 50 Hex Head Bolt	10
75	M12-60HB	M12X60 HEX HEAD BOLT	1
76	M12-70HB	M12X70 HEX HEAD BOLT	1
77	M16-90HB	M16 x 90 Hex Head Bolt	2
78	M16-000PW	M16 Plain Washer	6
79	M16-000NN	M16 Nylock Nut	3
80	M16-50HB	M16 x 50 Hex Head Bolt	1
81	M10-70HB	M10 x 70 Hex Head Bolt	1
82	M8-000PW	M8 Plain Washer From A	25
83	M8-000NN	M8 NYLOCK NUT	15
84	M10-120HS	M10 x 120 Hex Head Set Screw	2

MODEL: FM150/150PRO

YEAR/ MARK: 01/2012  
Onwards

D

C

B

A

D

C

B

A

ITEM NO.	PART NUMBER	Description	QTY.
85	F188-40 M10	HANDWHEEL M10 THROUGH THREADED 40MM 4 LUG	2
86	M8-30CS	M8 x 30 Cap Head Set Screw	10
87	M12-40HB	M12 x 40 Hex Head Bolt	10
88	M12-30HB	M12 x 30 Hex Head Bolt	2
89	FM120-016	ROLLER MOUNT. FM SERIES	2
90	M10-000CN	M10 Cage Nut	3
91	M10-100HS	M10 x 100 Hex Head Set Screw	1
92	FM-BLC	BATTERY LEAD COVER ASSEMBLY	1
93	FM150-FPC	FUEL PIPE COVER ASSEMBLY, FM150 SIZE, PC BLACK	1
94	M8-20HS	M8 x 20 Hex Head Set Screw	8
95	FM-FIS	FUEL INJECTION ENGINE SPACER, PC ORANGE	4
96	06183-ZCK-8000	MUFFLER TO SUIT HONDA GX630RH	1
97	OF04	BREATHER PLUG 1/4" BSP, MINTOR	1
98	FM150-VPC	VENT PIPE COVER, FM150, PC BLACK	1
99	FM-PWG	FM PRO WIRING GUARD, PC BLACK	1

MODEL:  
FM150/150PRO

YEAR/ MARK:  
01/2012  
Onwards

6

5

4

3

2

1

ITEM NO.	PART NUMBER	Description	QTY.
100	RECTIFIER HONDA	RECTIFIER FOR STANDARD SERIES = 31750-735-031 RECTIFIER FOR PRO SERIES = 31750-ZDX-003	1
101	M6-20HB	M6 x 20 Hex Head Bolt	2
102	M6-000PW	M6 Plain Washer Form A	2
103	M6-000CN	M6 Cage Nut to suit 3mm panel	2
104	FM150-BBC	BREAKER BAR CENTRE SECTION, FM150	1
105	FM-BBS	BREAKER BAR SIDE ASSEMBLY, SUIT FM, PC BLACK	2

NOTES:

A. THERE ARE 3 TYPES OF CLUTCH, CONFIRM MODEL YEAR AND USE THE TABLE BELOW:

YEAR/MODEL	CLUTCH PART NO.	NOTES
UP TO 02/2018	K110-1634	125MM OUTSIDE DIAMETER
02/2018 ONWARDS (GX630 ENGINE (STANDARD MODEL)	K125-1922	145MM OUTSIDE DIAMETER WITH 1" SHAFT
01/2021 ONWARDS (IGX700 & IGX800 ENGINE (PRO MODEL)	K125-1959	145MM OUTSIDE DIAMETER WITH 1 1/8" SHAFT

IT IS CRUCIAL THAT THE CORRECT CLUTCH IS SPECIFIED AS THEY ARE NOT INTERCHANGEABLE WITHOUT MODIFICATIONS TO STEELWORK AND ADDITIONAL PART REPLACEMENT.

B. MACHINES MANUFACTURED PRE 01/2017 USE **RM-DBA** DRAWBAR MOUNT & **SHS-12(ASSY)** SWIVEL HITCH SCREW ASSEMBLY.

C. KEYWAY SUPPLIED WITH ENGINE IS AVAILABLE AS A SEPERATE PART ON REQUEST. PLEASE CALL FOR INFORMATION.

D. VARIOUS TYRE TREAD PATTERNS ARE SUPPLIED. IF PURCHASING A SINGLE REPLACEMENT AND IT IS REQUIRED TO MATCH, THEN A PHOTOGRAPH OF THE CURRENT TREAD PATTERN IS REQUIRED.

FOR SMALL COMPONENTS OR OTHERS NOT LISTED IN THIS DOCUMENT PLEASE CALL CHAPMAN DIRECTLY.

ALL PART NUMBERS/DRAWINGS SUPPLIED ARE FOR GENERAL REFERENCE ONLY. MODIFICATIONS/CHANGES MAY BE MADE AT ANY TIME AT OUR DISCRETION.

MODEL:

FM150/150PRO

YEAR/ MARK:

01/2012  
Onwards

SHEET 12 OF 12

6

5

4

3

2

1