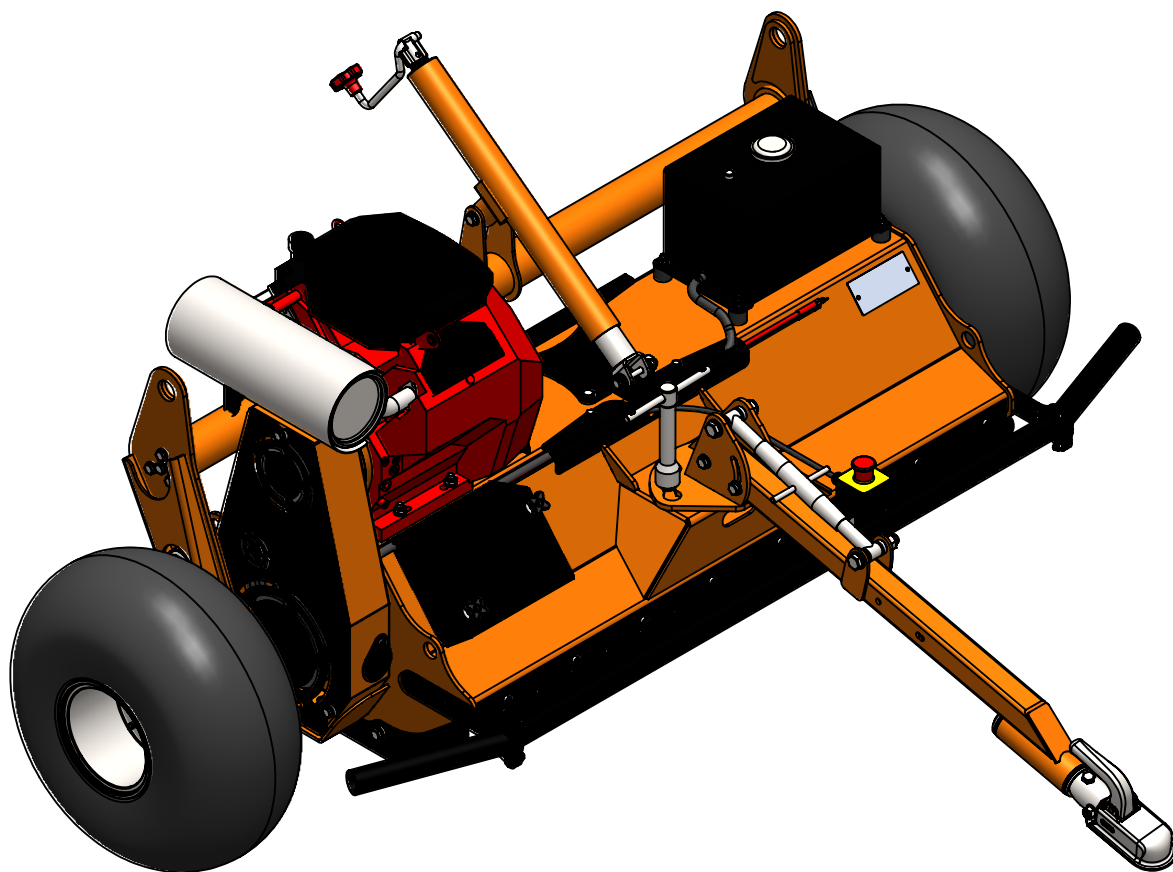


# FM120 & FM120 PRO - 1.2m Flail Mower

## Parts Drawings

BOTH STANDARD AND PRO MODEL  
ARE COVERED BY THESE PARTS DRAWINGS.

REFER TO NOTES ON THE LAST PAGE FOR  
EXCEPTIONS.



MODEL:

FM120/120PRO

YEAR/ MARK:

02/2018 Onwards

SHEET 1 OF 12

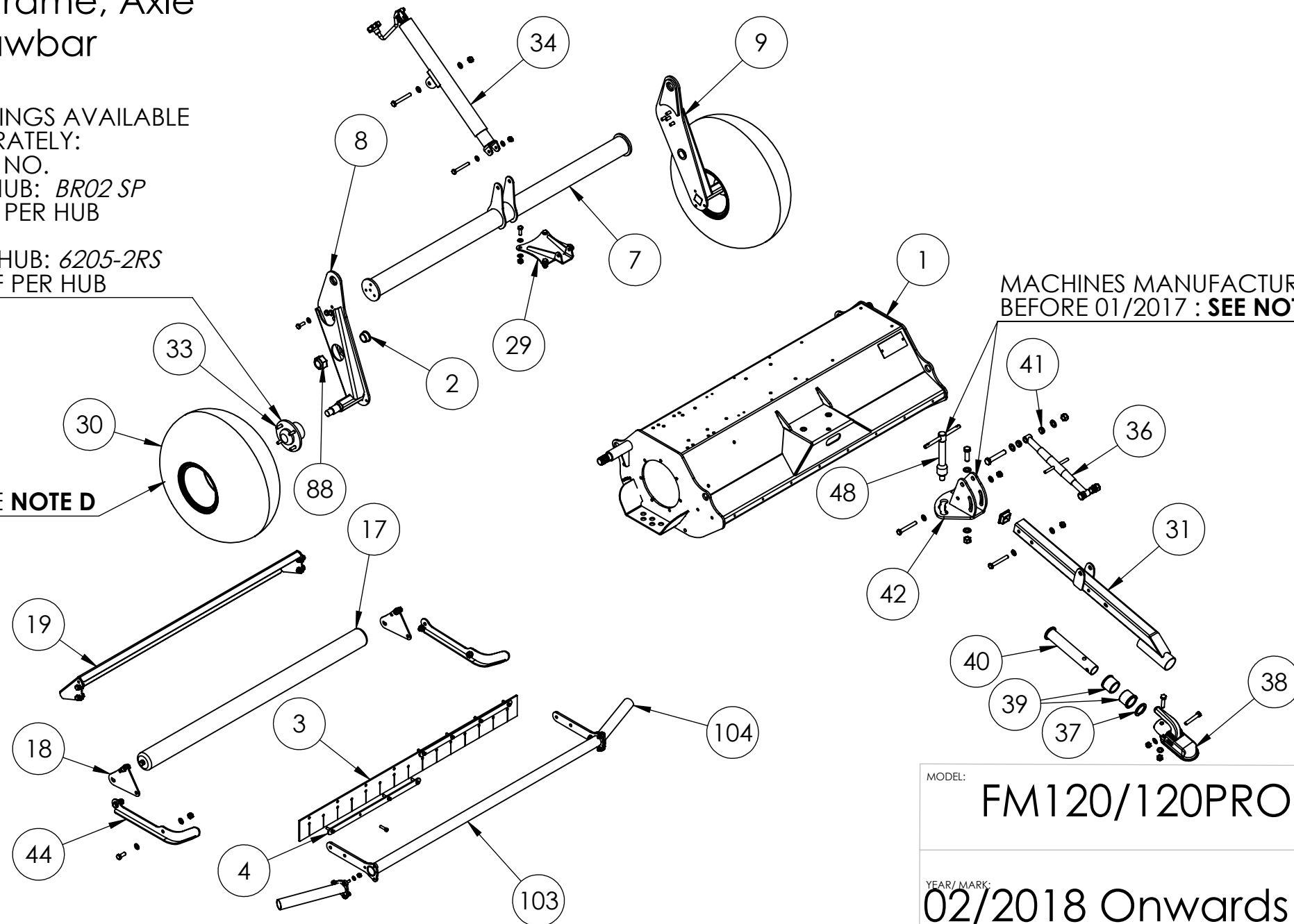
# Mainframe, Axle & Drawbar

BEARINGS AVAILABLE  
SEPERATELY:  
PART NO.  
SPP HUB: *BR02 SP*  
1 OFF PER HUB

ADR HUB: *6205-2RS*  
2 OFF PER HUB

MACHINES MANUFACTURED  
BEFORE 01/2017 : **SEE NOTE B**

**SEE NOTE D**



MODEL:

**FM120/120PRO**

YEAR/MARK:

**02/2018 Onwards**

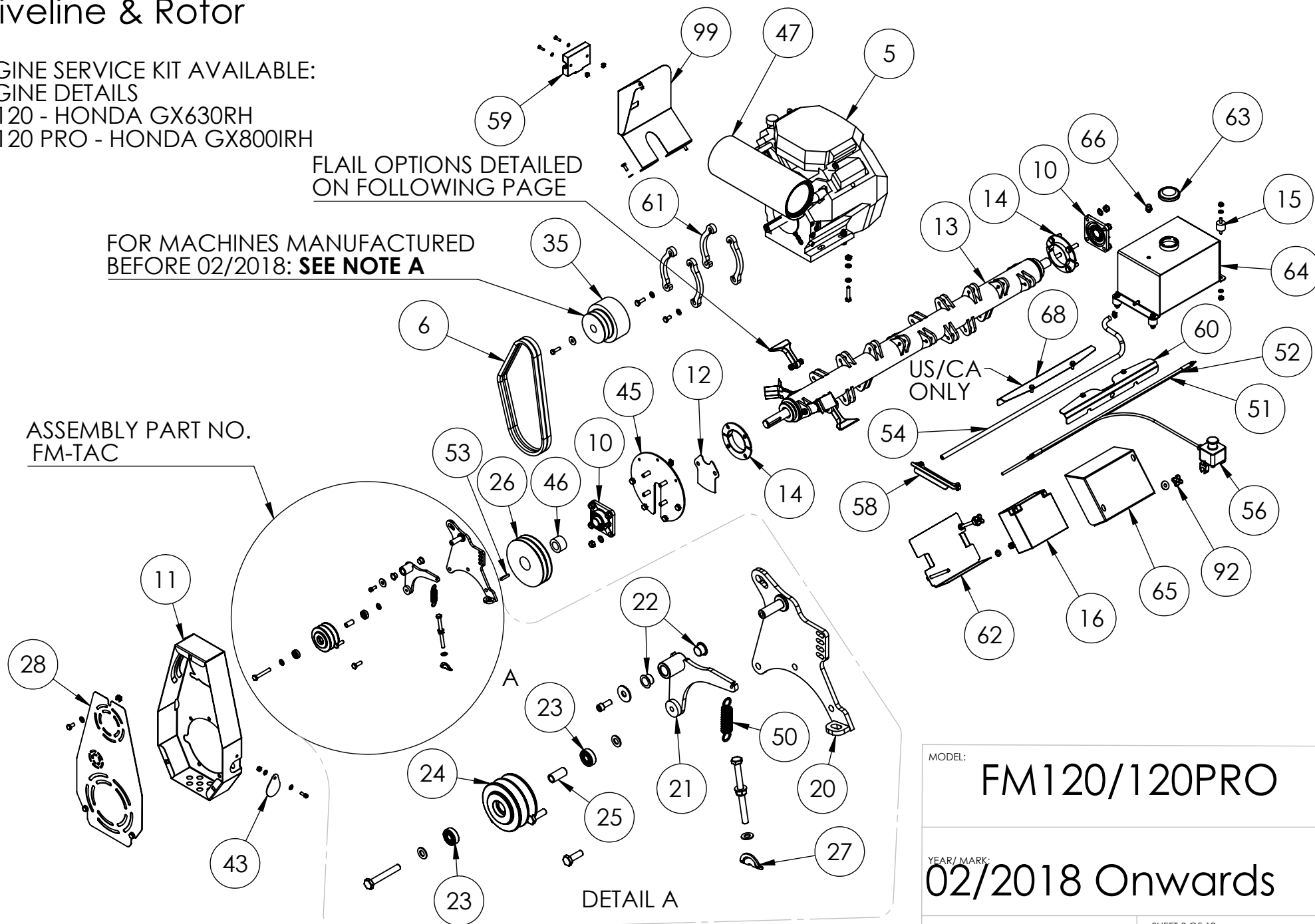
# Driveline & Rotor

ENGINE SERVICE KIT AVAILABLE:  
ENGINE DETAILS  
FM120 - HONDA GX630RH  
FM120 PRO - HONDA GX800IRH

FLAIL OPTIONS DETAILED  
ON FOLLOWING PAGE

FOR MACHINES MANUFACTURED  
BEFORE 02/2018: **SEE NOTE A**

ASSEMBLY PART NO.  
FM-TAC



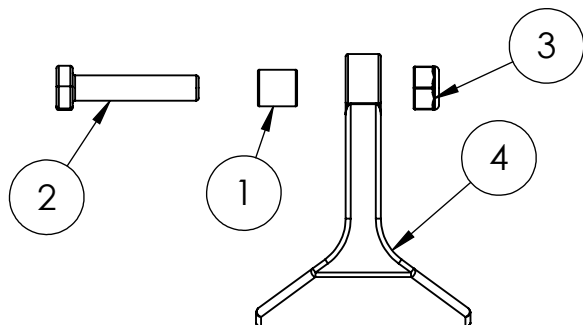
MODEL:

FM120/120PRO

YEAR/MARK:

02/2018 Onwards

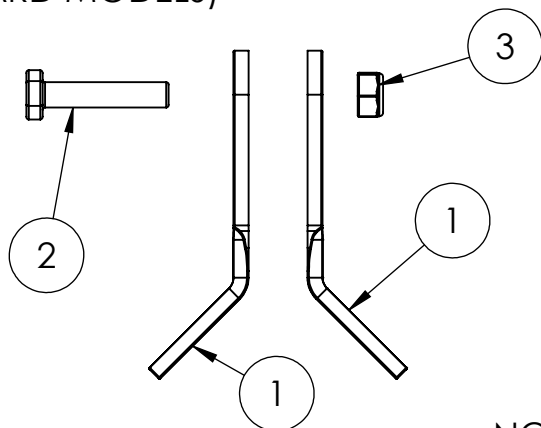
FM HAMMER FLAIL ASSEMBLY - PART NO. FM-HF(ASSY)  
(PRO MODEL)



COMPONENT PARTS

ITEM NO.	PART NUMBER	Description	QTY.
1	BB-01	BLADE BUSH	1
2	M10-50HB	M10 x 50 Hex Head Bolt	1
3	M10-000NN	M10 NYLOCK NUT	1
4	FM-HF	HAMMER FLAIL, REV B	1

FM Y FLAIL ASSEMBLY - PART NO. FM-SB(ASSY)  
(STANDARD MODELS)



COMPONENT PARTS

ITEM NO.	PART NUMBER	Description	QTY.
1	FM-SB	STANDARD FLAIL BLADE, SUIT FM SERIES, BLACK PAINTED	2
2	M10-50HB	M10 x 50 Hex Head Bolt	1
3	M10-000NN	M10 NYLOCK NUT	1

NO. FLAILS PER MACHINE

**FM120:**  
STANDARD=44  
HAMMER=22

**FM150:**  
STANDARD=52  
HAMMER=26

NOTE: CHECK WHICH FLAILS ARE FITTED TO THE MACHINE BEFORE ORDERING  
TO ENSURE THE CORRECT FLAILS ARE PURCHASED

MODEL:

FM120/120PRO

YEAR/ MARK:

02/2018 Onwards

</

6

5

4

3

2

1

ITEM NO.	PART NUMBER	Description	QTY.
1	FM120-MDA	MAIN DECK ASSEMBLY	1
2	MFM-3038-20	IGUS BEARING 30MM ID, 38MM OD, 20MM THICKNESS TOP HAT STYLE MFM-3038-20	2
3	CFM120-NI	RUBBER STRIP, TO SUIT FM120	1
4	FM120-011	FIXING STRIP, FM120 REV B	2
5	GX630RH (STANDARD) GX800IRH (PRO SERIES)	HONDA V-TWIN HORIZONTAL SHAFT ENGINE	1
6	BX41	Belt BX41	2
7	FM120-RBA	REAR BAR ASSEMBLY, FM120	1
8	FM-SAR	FM STANDARD AXLE ASSEMBLY, RH	1
9	FM-SAL	STANDARD AXLE ASSEMBLY LH	1
10	SF30-RHP	30MM ID HOUSED BEARING	2
11	FM-BGA	BELT GUARD ASSEMBLY, FM SERIES	1
12	FM120-002	COVER PLATE, 2MM	1
13	FM120-MRA	MAIN ROTOR ASSEMBLY, FM120	1
14	FM-RGA	ROTOR GUARD ASSEMBLY, FM SERIES	4
15	AD3025M820-1.5	RUBBER MOUNT WAISTED AD3025 M8X20MM THREAD	4
16	518901026a514	BATTERY POWERSPORTS AGM 12V 18AH	1
17	FM120-RRA	REAR ROLLER ASSEMBLY, FM120, OA=1230, OF=1250	1

MODEL:

FM120/120PRO

YEAR/ MARK:

YEAR/ MARK: 02/2018 Onwards

SHEET 6 OF 12

6

5

4

3

2

1

D

C

B

A

D

C

B

A

ITEM NO.	PART NUMBER	Description	QTY.
18	FM120-016	ROLLER MOUNT. FM SERIES	2
19	FM120-RSA	REAR SKIRT ASSEMBLY, FM120	1
20	FM-TBA	TENSIONER BASE ASSEMBLY	1
21	FM-TAA	TENSIONER ARM ASSEMBLY	1
22	MFM-1618-12	IGUS BEARING 16MM ID, 18MM OD, 12MM THICKNESS TOP HAT STYLE MFM-1618-12	2
23	62002RS-SKF	BEARING, BALL, 10MM ID 30MM OD	2
24	SPB90/2ZP	PULLEY, 2 GROOVE, 90MM	1
25	SPB90/2 SPACER	SPACER TO SUIT SPB90/2 PULLEY	1
26	SPB170-2	SPB170/2 PULLEY, 2 GROOVE, 170MM PCD, B SECTION TO SUIT 2012 TAPERLOCK	1
27	FM120-003	TENSIONER SPRING CLIP	1
28	FM120-001	BELT GUARD COVER, REV E	1
29	FM-HAM	HEIGHT ADJUSTER MOUNT	1
30	WAT-22118W	22X11X8 WHEEL ASSEMBLY BEFORE FEB 2022 : ON 4X4" PCD RIM FEB 2022 ONWARDS: ON 4X100MM RIM	2
31	DBA-900	DRAWBAR 900MM LONG 50X50X5MM BOX ASSEMBLY	1
32	BTC-5050T	BOX CAP THICK WALL 3-5MM TO SUIT 50X50	1
33	ADR-200H	BEFORE FEB 2022 4X4" PCD; FEB 2022 ONWARDS 4X100MM PCD	2
34	HAI-6091	Height Adjustment Jack Rev c	1

MODEL:

FM120/120PRO

YEAR/ MARK:

02/2018 Onwards

SHEET 7 OF 12

	6	5	4	3	2	1	
D	ITEM NO.	PART NUMBER	Description				QTY.
	35	SEE NOTE A	CLUTCH & PULLEY (SEE NOTE A FOR PART NUMBERS)				1
	36	TL1902000GP	TOP LINK CAT 0				1
	37	SH-003	SWIVEL HITCH WASHER 44MM ID 60MM OD 5MM THICK				1
	38	8802429X	8802429X COUPLING 50MM BALL TO SUIT 43MM TUBE				1
	39	SH-002	SWIVEL HITCH BUSH, DELRIN, REV C				2
	40	SH-001	SWIVEL HITCH DRAWTUBE ASSEMBLY, REV C				1
	41	DBS-25179	DRAWBAR SPACER 25MM OD, 17MM ID, 9MM LONG				4
	42	FM-DMA	DRAWBAR MOUNT ASSEMBLY, FM				1
	43	FM120-071	BELT GUARD GREASE POINT COVER				1
	44	FM-SMA	SKID MOUNT ASSEMBLY				2
	45	FM-DSB	DRIVEN SIDE BEARING MOUNT, FM				1
	46	2012-30	TAPERLOCK 30MM ID TO SUIT 2012 SOCKET				1
	47	06183-ZCK-8000	MUFFLER TO SUIT HONDA GX630RH				1
	48	SHS-20 (ASSY)	SWIVEL MOUNT 20MM, ASSEMBLY				1
	49	SERIALPLATE	SERIAL PLATE CHAPMAN				1
	C	50	E07501052500M	SPRING, 19MM OD, 63MM FREE LENGTH, 10N/MM			
51		BCR-720	BATTERY CABLE RED 720MM TO FIT FM SERIES				1
B							
A							

MODEL:	FM120/120PRO
YEAR/ MARK:	02/2018 Onwards
SHEET 8 OF 12	

6	5	4	3	2	1
---	---	---	---	---	---



D

C

B

A

6

5

4

3

2

1

ITEM NO.	PART NUMBER	Description	QTY.
52	BCB-800	BATTERY CABLE, BLACK, 770MM, 16MM DIA, TERMINATED ENDS ON 8MM TERMINALS, HEAT SHRINK COVERS	1
53	68858740	FEATHERED KEY 8 X 7 X 40MM	1
54	BSAU-8-100	FUEL HOSE, 8MM ID, 15MM OD, RUBBER, PER M	1
55	CTL-13.7	ROTOR SPRING BAND, Ø13.7-16.5MM	2
56	FM-ESA	EMERGENCY STOP ASSEMBLY, TO SUIT FM SERIES	1
57	FM-SB	STANDARD FLAIL BLADE, SUIT FM SERIES, BLACK PAINTED	4
58	FM-BLC	BATTERY LEAD COVER ASSEMBLY	1
59	RECTIFIER HONDA	RECTIFIER FOR STANDARD SERIES = 31750-735-031 RECTIFIER FOR PRO SERIES = 31750-ZDX-003	1
60	FM120-FPC	FUEL PIPE COVER ASSEMBLY, FM SERIES	1
61	FM-FIS	FUEL INJECTION ENGINE SPACER, PC ORANGE	4
62	FM-BLA	BATTERY LOWER ASSEMBLY	1
63	FCM50651	FUEL CAP VENTED 50MM	1
64	FM-FTA	FUEL TANK ASSEMBLY, FM	1
65	FM-BUA	BATTERY UPPER ASSEMBLY	1
66	OF04	BREATHER PLUG 1/4" BSP, MINTOR	1
67	FM Hammer Flail Assembly	Hammer Flail Assy (FULL DETAILS ON PAGE 4)	2
68	FM120-VPC	VENT PIPE COVER ASSEMBLY, FM120 (US/CA ONLY)	1

MODEL:  
FM120/120PRO

YEAR/ MARK:  
02/2018 Onwards

SHEET 9 OF 12

6

5

4

3

2

1

6

5

4

3

2

1

ITEM NO.	PART NUMBER	Description	QTY.
69	M8-20HS	M8 x 20 Hex Head Set Screw	8
70	M8-000PW	M8 Plain Washer From A	24
71	M10-000PWG	M10 Plain Washer Form G	3
72	M12-90HB	M12X90MM HEX HEAD BOLT	3
73	M10-50HB	M10 x 50 Hex Head Bolt	6
74	M10-000NN	M10 NYLOCK NUT	20
75	M12-60HB	M12X60 HEX HEAD BOLT	1
76	M12-70HB	M12X70 HEX HEAD BOLT	1
77	M12-000PW	M12 PLAIN WASHER FORM A	24
78	M12-000NN	M12 NYLOCK NUT	17
79	M16-50HB	M16 x 50 Hex Head Bolt	1
80	M16-000PW	M16 Plain Washer	6
81	M16-000NN	M16 Nylock Nut	3
82	M16-90HB	M16 x 90 Hex Head Bolt	2
83	M10-80HB	M10 x 80 Hex Head Bolt	1
84	M10-000PW	M10 PLAIN WASHER FORM A	58

MODEL:

FM120/120PRO

YEAR/ MARK:

02/2018 Onwards

SHEET 10 OF 12

6

5

4

3

2

1

6	5	4	3	2	1
ITEM NO.	PART NUMBER	Description			QTY.
85	M10-30HB	M10 x 30 Hex Head Bolt			24
86	M10-20HB	M10 x 20 Hex Head Bolt			6
87	M10-120HS	M10 x 120 Hex Head Set Screw			3
88	M30-000NN	M30 Nylock Nut			2
89	M10-70HB	M10 x 70 Hex Head Bolt			1
90	M8-20CS	M8 x 20 Cap Head Set Screw			2
91	M8-000PWG	M8 Plain Washer Form G			1
92	F188-40 M10	HANDWHEEL M10 THROUGH THREADED 40MM 4 LUG			2
93	M12-30HB	M12 x 30 Hex Head Bolt			2
94	M12-40HB	M12 x 40 Hex Head Bolt			10
95	M8-30CS	M8 x 30 Cap Head Set Screw			8
96	M8-000NN	M8 NYLOCK NUT			15
97	M10-000CN	M10 Cage Nut			3
98	3-8 24 x 1 1-4 UNF	3-8 x1 1-4 UNF 24 Hex Head Bolt			1
MODEL:					FM120/120PRO
YEAR/ MARK:					02/2018 Onwards
					SHEET 11 OF 12
6	5	4	3	2	1

6	5	4	3	2	1
ITEM NO.	PART NUMBER	Description			QTY.
99	FM-PWG	FM PRO WIRING GUARD, PC BLACK			1
100	M6-20HB	M6 x 20 Hex Head Bolt			2
101	M6-000PW	M6 Plain Washer Form A			2
102	M6-000CN	M6 Cage Nut to suit 3mm panel			2
103	FM120-BBC	BREAKER BAR CENTRE ASSEMBLY, FM120			1
104	FM-BBS	BREAKER BAR SIDE ASSEMBLY, SUIT FM, PC BLACK			2

NOTES:

A. THERE ARE 3 TYPES OF CLUTCH, CONFIRM MODEL YEAR AND USE THE TABLE BELOW TO DETERMINE THE PART NUMBER:

YEAR/MODEL	CLUTCH PART NO.	NOTES
UP TO 02/2018	K110-1634	125MM OUTSIDE DIAMETER
02/2018 ONWARDS (GX630 ENGINE (STANDARD SERIES))	K125-1922	145MM OUTSIDE DIAMETER WITH 1" SHAFT
01/2021 ONWARDS (IGX800 ENGINE (PRO SERIES))	K125-1959	145MM OUTSIDE DIAMETER WITH 1 1/8" SHAFT

IT IS CRITICAL THAT THE CORRECT CLUTCH IS SPECIFIED AS THEY ARE NOT INTERCHANGEABLE WITHOUT MODIFICATIONS TO METALWORK AND REPLACEMENT PARTS.

B. MACHINES MANUFACTURED PRE 01/2018 USE **RM-DBA** DRAWBAR MOUNT & **SHS-12 (ASSY)** SWIVEL HITCH SCREW ASSEMBLY.

C. KEYWAY SUPPLIED WITH ENGINE IS AVAILABLE AS A SEPERATE PART ON REQUEST. PLEASE CALL FOR MORE INFORMATION.

D. VARIOUS TYRE TREAD PATTERNS ARE SUPPLIED. IF PURCHASING A SINGLE REPLACEMENT AND IT IS REQUIRED TO MATCH, THEN A PHOTOGRAPH OF THE CURRENT TREAD PATTERN IS REQUIRED.

FOR SMALL COMPONENTS OR OTHERS NOT LISTED IN THIS DOCUMENT, PLEASE CALL CHAPMAN DIRECTLY

ALL PART NUMBERS/DRAWINGS SUPPLIED ARE FOR GENERAL REFERENCE ONLY  
MODIFICATIONS/CHANGES MAY BE MADE AT ANY TIME AT OUR DISCRETION.

MODEL:  
FM120/120PRO

YEAR/ MARK:  
02/2018 Onwards