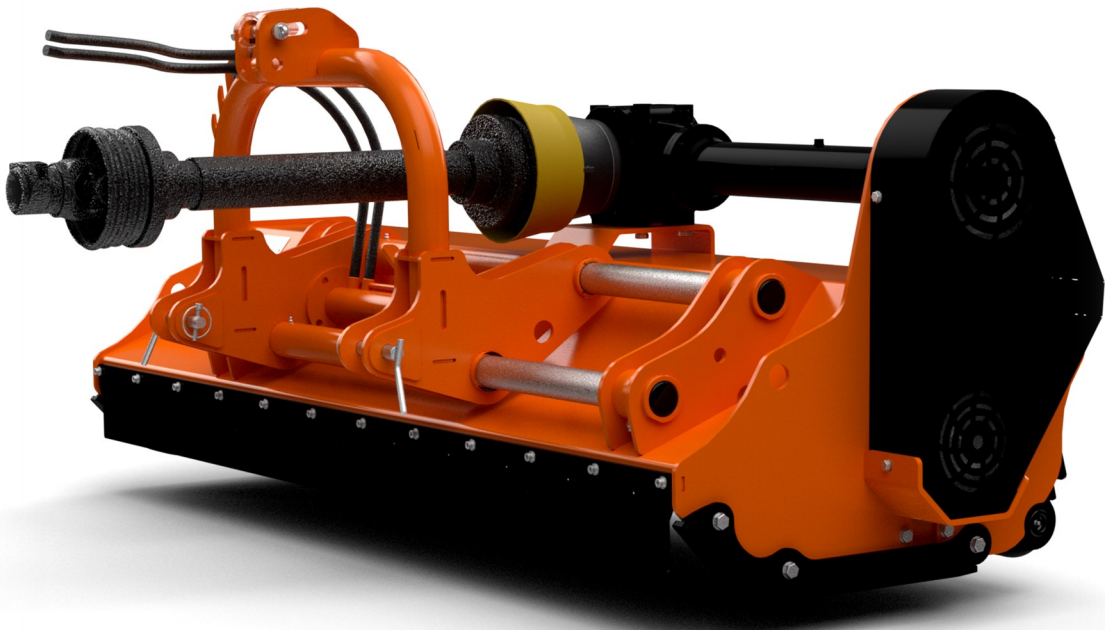


CHAPMAN

Parts List

CFM150 & CFM180 - Compact Flail Mower



Manufacture Date: October 2023 Onwards

Revision: March 2025

Chapman Machinery Ltd, Hele Barton, Week St. Mary, Holsworthy, Devon EX22 6XR

Tel: 01288 308149

Email: sales@chapman.co.uk

CONTENTS

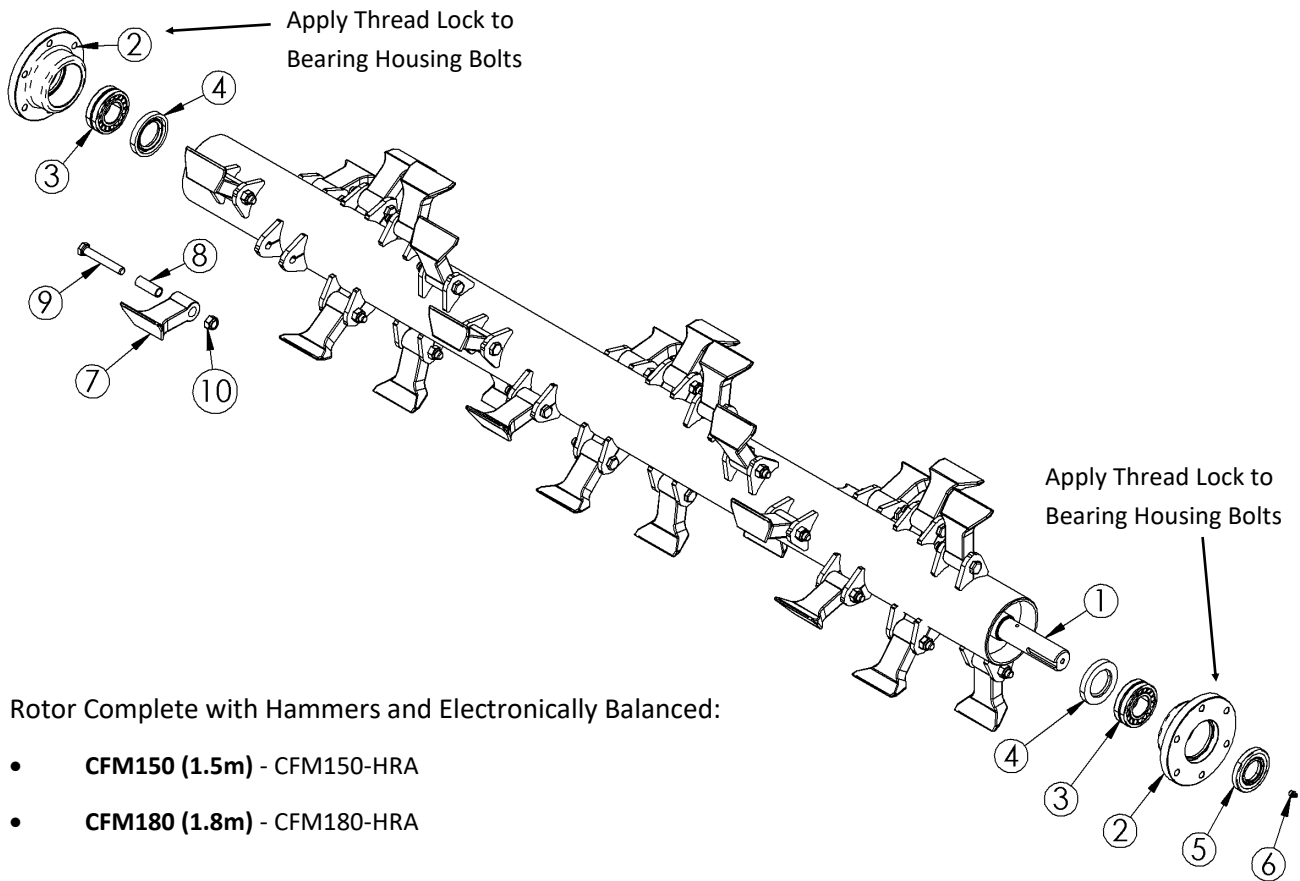
Rotor Assembly.....	page 3
Mainframe, Skids & Rear Roller.....	page 4-5
Rear Roller Components	page 5
Hydraulic Sideshift Headstock	page 6
Driveline Components	page 7

For any queries or components not listed in these parts drawings,
Please contact Chapman Machinery directly.

Please confirm parts are suitable for the year of manufacture and model variant of your
machine.

For parts lists for earlier machines, Please contact Chapman Machinery directly.

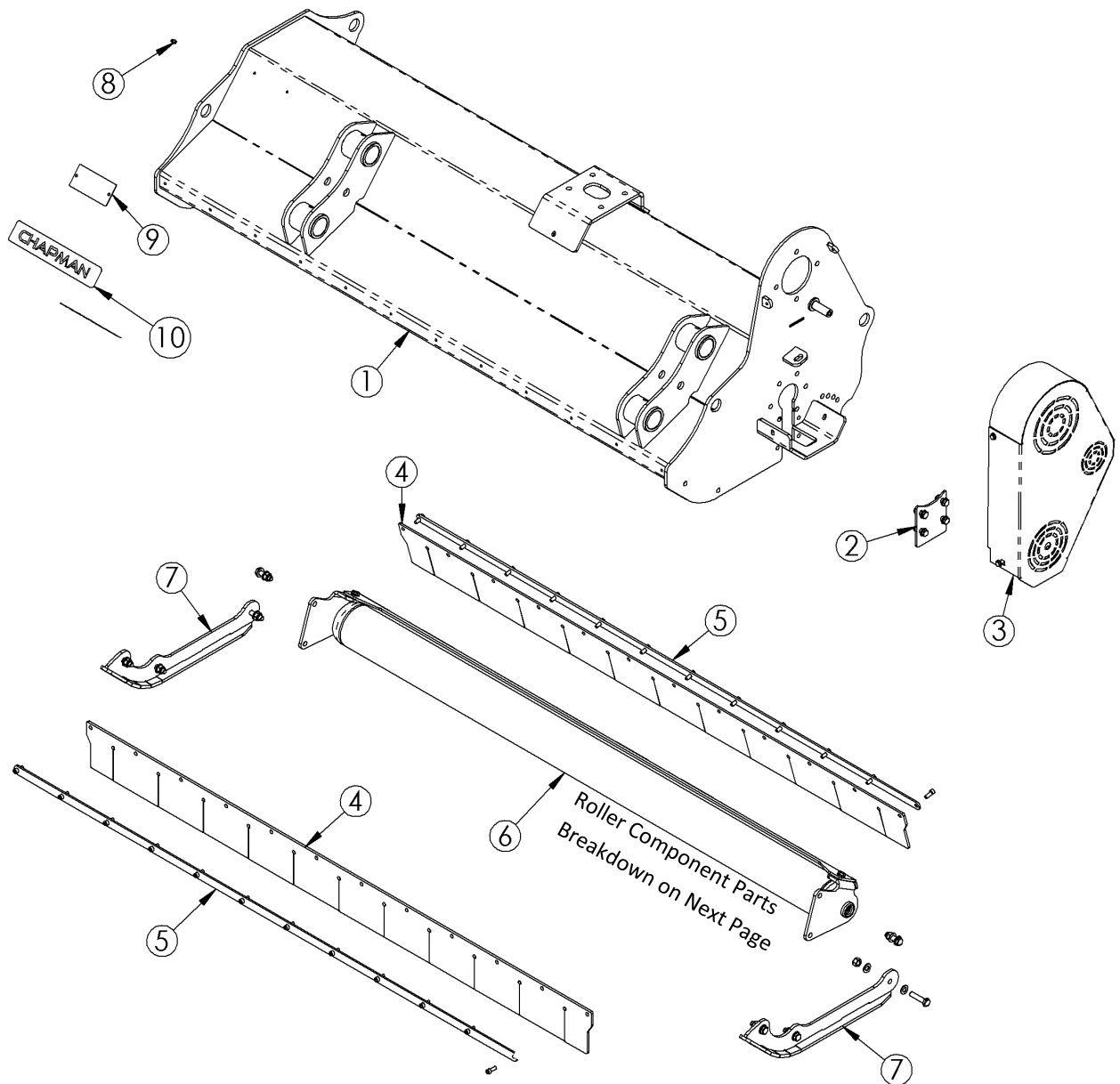
ROTOR ASSEMBLY



Machine Model

REF.	CFM150 (1.5m)	CFM180 (1.8m)	Description	QTY. CFM150	QTY. CFM180
1	CFM150-MRA	CFM180-MRA	Main Rotor Assembly	1	1
2	BH-72150		Bearing Housing Assembly	2	2
	M12-30HB		M12 x 30 Setscrew 8.8	12	12
	M12-000PW		M12 Plain Washer Form A	12	12
3	22207E		Spherical Roller Bearing	2	2
4	R42x72x10		Inner Shaft Seal	2	2
5	R35x72x10		Outer Shaft Seal	1	1
6	GN8125180		Grease Nipple M8 Straight	1	1
7	CFM-HF-01		Hammer Flail CFM Series	22	28
8	BB-02(HARDENED)		Hardened Flail Bush	22	28
9	M12-80HB10.9		M12 x 80mm Bolt GRADE 10.9	22	28
10	M12-000NN		M12 Nylon Lock Nut	22	28

MAINFRAME ASSEMBLY



Machine Model

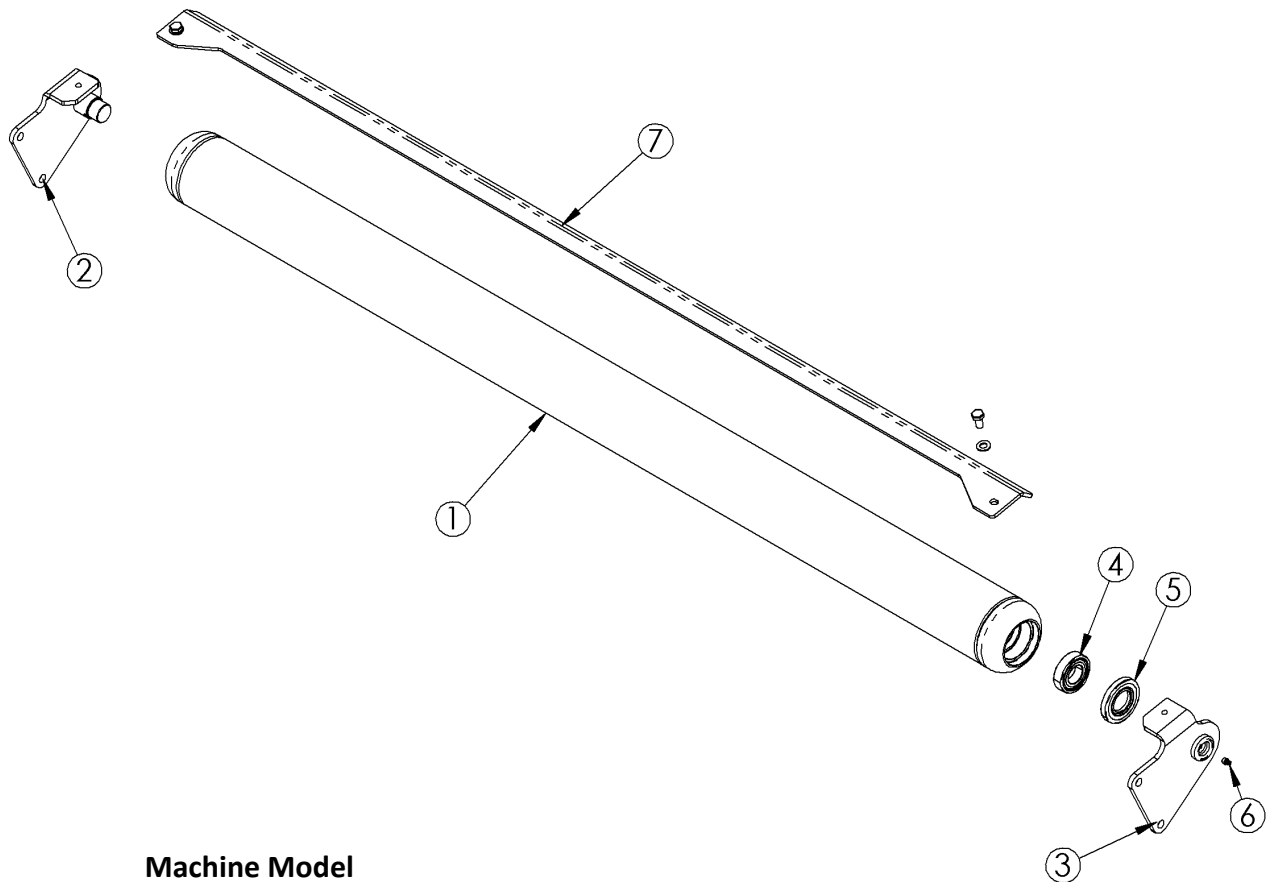
REF.	CFM150 (1.5m)	CFM180 (1.8m)	Description	QTY. CFM150	QTY. CFM180
1	CFM150-MDA	CFM180-MDA	Main Deck Assembly	1	1
2	CFM-SCA		Side Cover Plate	1	1
	M10-30HB		M10 x 30 Setscrew 8.8	4	4
	M10-000PW		M10 Plain Washer Form A	8	8
	M10-000NN		M10 Nylon Lock Nut	4	4
3	CFM-BGA		Belt Guard	1	1
	M8-20HS		M8 x 30 Setscrew 8.8	4	4
	M8-000PW		M8 Plain Washer Form A	4	4
4	RS-CFM150	RS-CFM180	Insertion Rubber Strip	2	2
5	CFM150-RFS	CFM180-RFS	Rubber Fixing Strip	2	2
	M8-20CS		M8 x 20 Socket Head Set Screw	20	24
6	CFM150-RRA(ASSY)	CFM180-RRA(ASSY)	Rear Roller Assembly Complete, inc. Roller,	1	1

MAINFRAME ASSEMBLY

Machine Model

REF.	CFM150 (1.5m)	CFM180 (1.8m)	Description	QTY. CFM150	QTY. CFM180
7	CFM-SA		Skid Assembly CFM Series	2	2
	M12-40HB		M12 x 40 Bolt 8.8	6	6
	M12-50HB		M12 x 50 Bolt 8.8	2	2
	M12-000PW		M12 Plain Washer Form A	16	16
	M12-000NN		M12 Nylon Lock Nut	8	8
8	GN8125180		Rotor Bearing Grease Nipple M8 Straight	1	1
9	Serial Number Plate		NOT AVAILABLE AS SPARE PART	1	1
10	CFM150-DECAL	CFM180-DECAL	Complete Decal Kit CFM	1	1

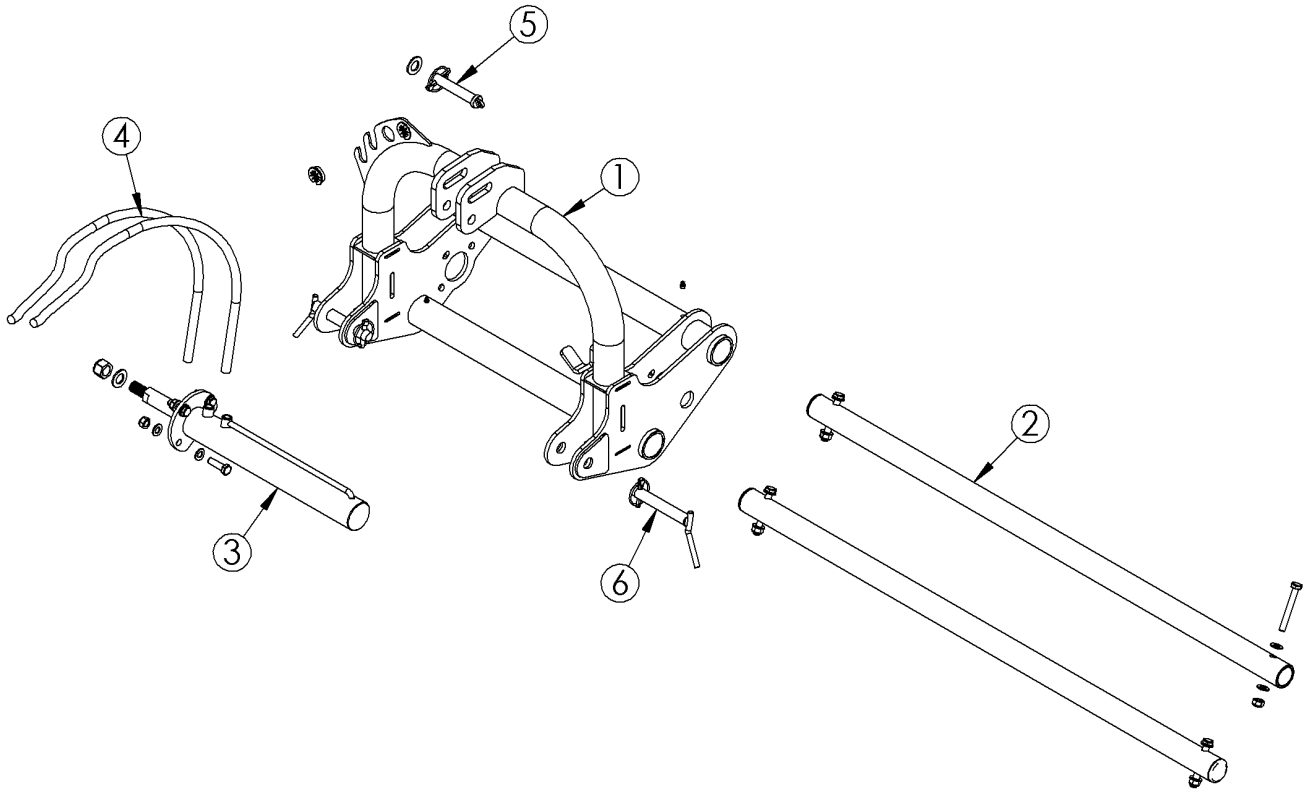
REAR ROLLER ASSEMBLY



Machine Model

REF.	CFM150 (1.5m)	CFM180 (1.8m)	Description	QTY. CFM150	QTY. CFM180
1	CFM150-RRR	CFM180-RRR	Rear Roller	1	1
2	CFM-RRM-RH		Rear Roller Mount RH Side	1	1
3	CFM-RRM-LH		Rear Roller Mount LH Side	1	1
	M12-40HB		M12 x 40 Bolt 8.8	2	2
	M12-50HB		M12 x 50 Bolt 8.8	2	2
	M12-000PW		M12 Plain Washer Form A	8	8
	M12-000NN		M12 Nylon Lock Nut	4	4
4	6206		Rear Roller Bearing	2	2
5	R35x72x10		Rear Roller Seal	2	2
6	GN8125180		Grease Nipple M8 Straight	2	2
7	CFM150-RRS	CFM180-RRS	Rear Roller Scraper	1	1
	M10-20HS		M10 x 20 Setscrew 8.8	2	2
	M10-000PW		M10 Plain Washer Form A	2	2

HEADSTOCK & SIDESHIFT



Machine Model

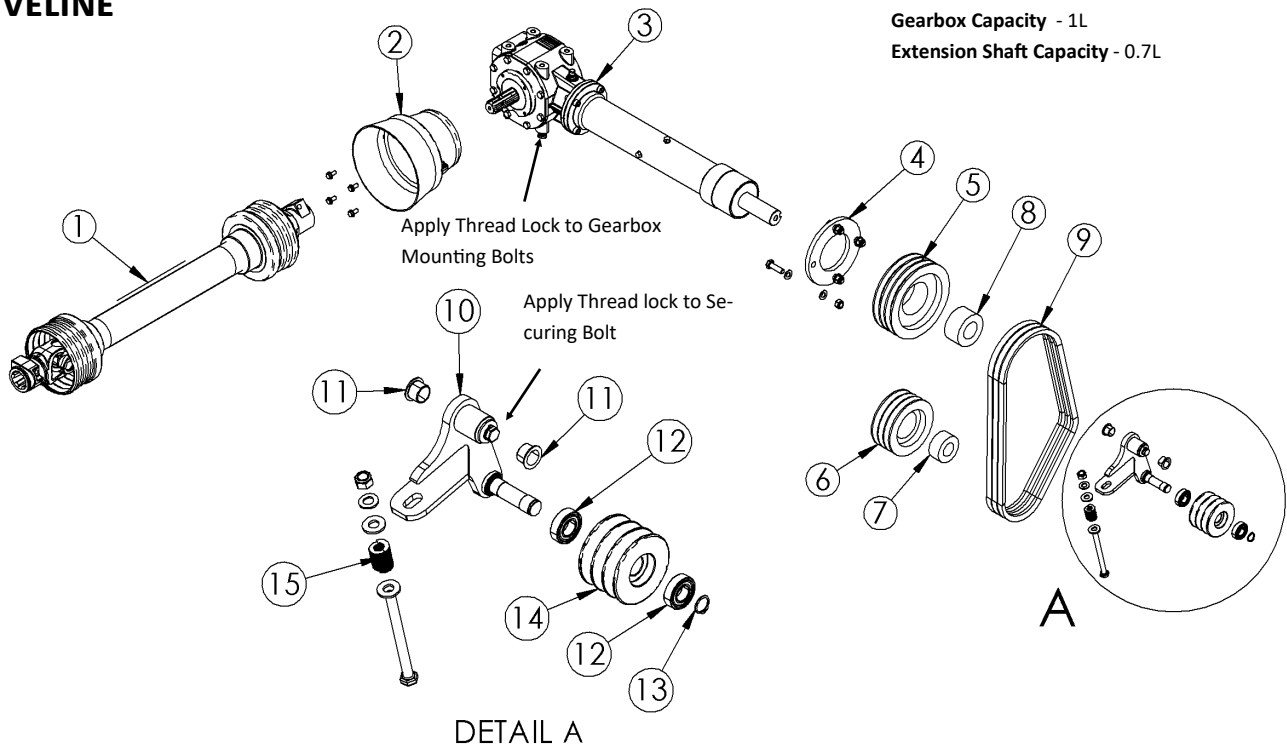
REF.	CFM150 (1.5m)	CFM180 (1.8m)	Description	QTY. CFM150	QTY. CFM180
1	CFM-HA		Sliding Headstock Assembly	1	1
	BUS138-BLK		Hose Guide Bush	2	2
	GN8125180		Grease Nipple M8 Straight	4	4
2	CFM-HST		Headstock Sliding Tube	2	2
	M12-90HB		M12 x 90 Bolt 8.8	4	4
	M12-000PW		M12 Plain Washer Form A	8	8
	M12-000NN		M12 Nylon Lock Nut	4	4
3	C50-30-350		Side Shift Cylinder, Flange Mount	1	1
	M20-000PW		M10 Plain Washer Form A	1	1
	M20-000NN		M20 Nylon Lock Nut	1	1
	M12-40HB		M12 x 40 Bolt 8.8	3	3
	M12-000PW		M12 Plain Washer Form A	6	6
	M12-000NN		M12 Nylon Lock Nut	3	3
	DNB06A		3/8" M/M Union	2	2
	TT06		Bonded Seal 3/8"	2	2
4	HA-3838381500		Hose Assembly CFM Series	2	2
	SKPM12C06		Male ISO A Coupler 1/8"	2	2
	TT06		Bonded Seal 3/8"	2	2
	FF9006K		Compact Swivel Elbow F/F 3/8" BSP 90°	2	2
	DNB06A		Adaptor M/M 3/8" BSP Straight	2	2
5	Z319100KR		Top Link Pin CAT 1 Inc. Linch Pin	1	1
	M20-000PW		Plain washer M20 Form A	2	2
			Cat 1 to CAT 2 Adaptor Bush (Top Link)	1	1
6	Z522130KR		Lower Link Pin CAT 1 Inc. Linch Pin	2	2
			CAT 1 to CAT 2 Adaptor Bush (Lower Link)	2	2

DRIVELINE

Transmission Oil, Mineral, API GL-4, SAE 80W-90

Gearbox Capacity - 1L

Extension Shaft Capacity - 0.7L



Machine Model

REF.	CFM150 (1.5m)	CFM180 (1.8m)	Description	QTY. CFM150	QTY. CFM180
1	07-625-201-11		Complete PTO Shaft CFM Series	1	1
2	190-000-548		PTO Guard Cone (Fixed)	1	1
	M8-10CS		M8 x 10 Cap Head Screw 8.8	4	4
	M8-000PWG		M8 Plain Washer Form G	4	4
3	CFM-GBA		Complete Gearbox CFM Series	1	1
	M12-30HB		M12 Setscrew 8.8	4	4
	M12-000PW		M12 Plain Washer Form A	4	4
4	CFM-GSC		Gearbox Support Collar	1	1
	M12-40HB		M12 x 40 Bolt 8.8	4	4
	M12-000PW		M12 Plain Washer Form A	8	8
	M12-000NN		M12 Nylon Lock Nut	4	4
5	SPB190x3		Gearbox Output Pulley	1	1
	6885128100		Key Round Ends 12 x 8 x 100	1	1
6	SPB140x3		Rotor Drive Pulley	1	1
	688510850		Key Round Ends 10 x 8 x 50	1	1
7	2012x35		Rotor Drive Taper Lock Bush	1	1
8	2517x40		Output Shaft Taper Lock Bush	1	1
9	SPB1250QPX		Cogged EPDM Drive Belt XPB1250	3	3
10	CFM-TAA		Tension Adjustment Arm	1	1
	M10-30HS		M10 x 30 Setscrew 8.8	1	1
	M10-000PWG		M10 Plain Washer Form G	1	1
11	P210FM-2023-16		Tensioner Pivot Bushing	2	2
12	6004-2RSH		Tensioner Pulley Bearing	2	2
13	D1400-0200		External Circlip 20mm	1	1
14	SPB90/3		Tensioner Pulley	1	1
15	R204505		Tensioner Spring Blue	1	1
	M12-140HS		M12 x 140 Setscrew 8.8	1	1
	M12-000PW		M12 Plain Washer Form A	1	1
	M12-000PWG		M12 Plain Washer Form G	2	2
	M12-000NN		M12 Nylon Lock Nut	1	1